



## Contents

<b>Our Values</b>	<b>01</b>
<b>Games</b>	<b>02</b>
Categories Offered	<b>03</b>
Game Design Elements	<b>04</b>
<b>Gaming Management System</b>	<b>05</b>
Game Configuration	<b>06</b>
Reporting	<b>07</b>
Jackpot Management	<b>08</b>
Security and Fraud	<b>09</b>
Player Management	<b>10</b>
Bonus Management	<b>11</b>
Loyalty Points	<b>11</b>
Language and Currencies	<b>13</b>
Terminals	<b>14</b>
<b>Client Support</b>	<b>15</b>
Services	<b>16</b>
<b>Product Solutions</b>	<b>17</b>
+Play	<b>18</b>
TerminalPlay	<b>19</b>
<b>Contact Us</b>	<b>20</b>

## Our Values

Our passion for gaming drives us to develop high-quality games crafted for entertainment and performance that exceed the expectations of our clients. We know what operators need and what players want and this has sculpted us into a brand that centres around value. This value lies in our approach to our customers and, by extension, their customers.

Creating only RNG games, our focus is clear and we keep things simple. We provide pure entertainment through our games, which boast graphically-rich content and amazing sound in an easy-to-understand and user-friendly way.

As a smaller company, we are able to work quicker, respond faster and make decisions instantly. Accordingly, our clients benefit from our better royalty rates and generate revenue immediately.

We take pride in developing solid relationships with our clients and provide hands-on technical and business support, which, coupled with products of a world-class standard, enables us to earn our success.

*You are smart to choose us.*

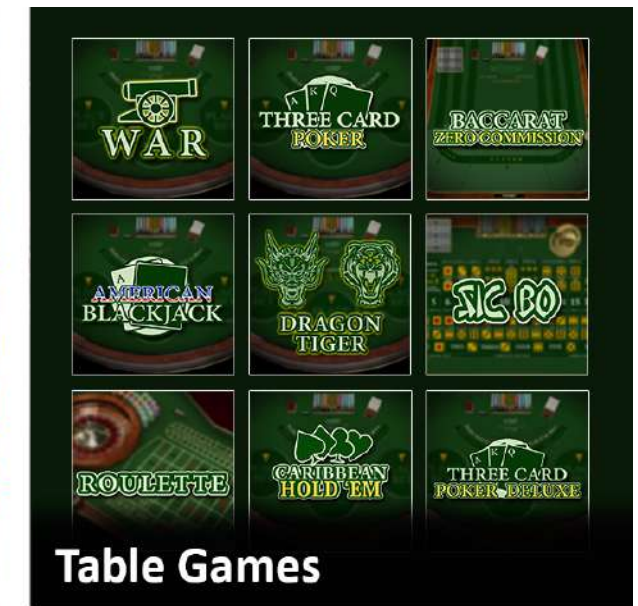
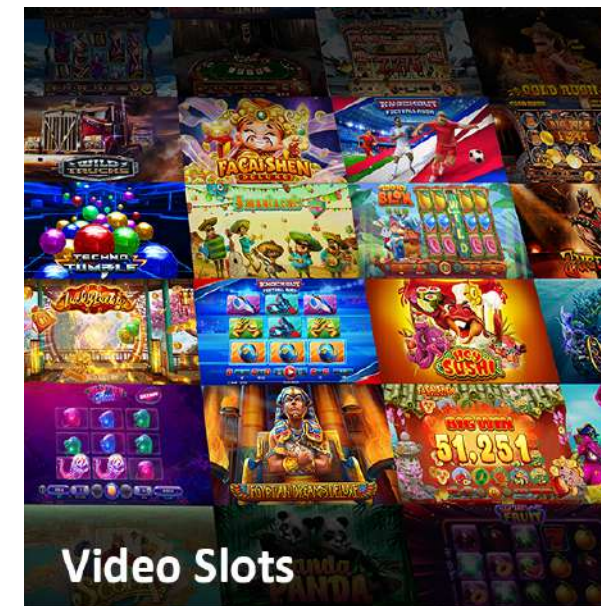


## Games

Every aspect of our games is designed to improve the players' overall experience. The content is graphically-rich with amazing sounds and features that are presented in an easy-tounderstand and user-friendly way.



## Categories Offered





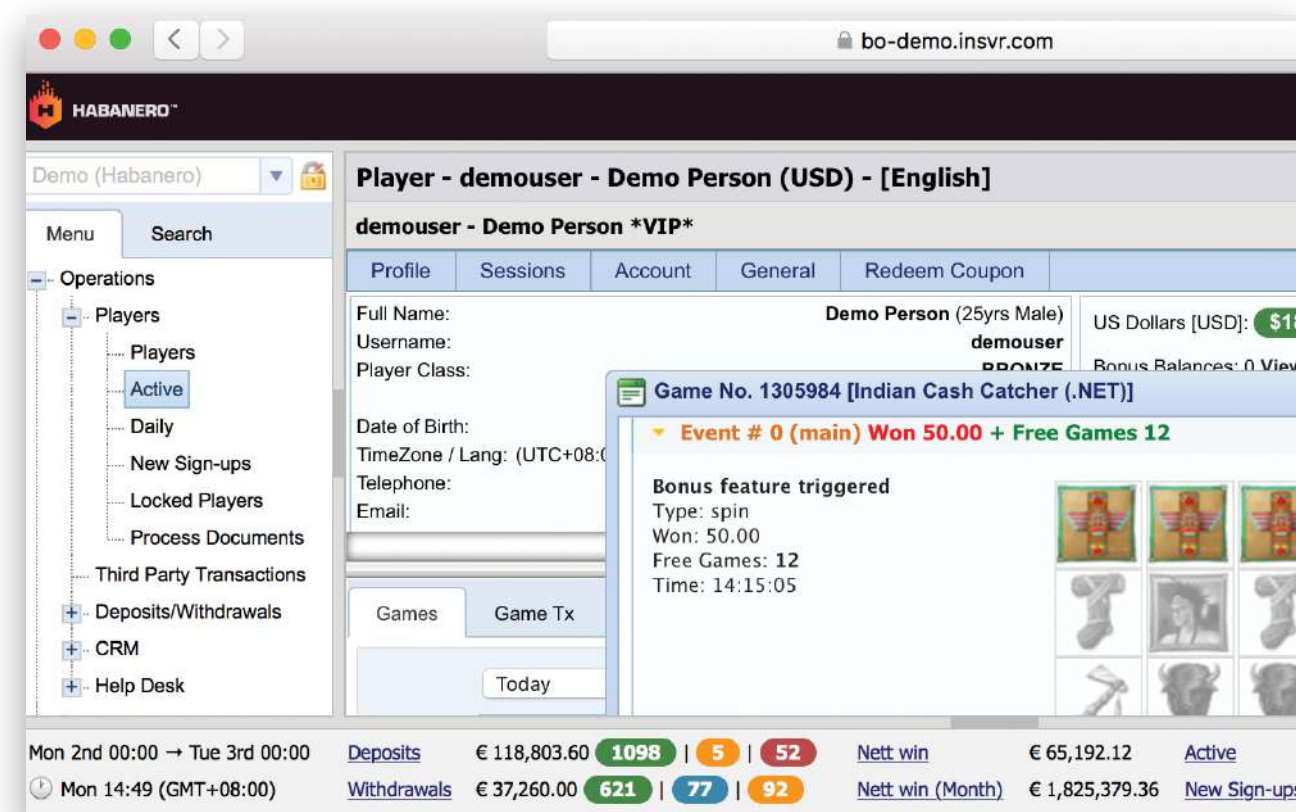
## Game Design Elements

- Works seamlessly across all devices
- Shared components for quicker loading times
- Uncluttered, user-friendly interface
- Play in portrait and landscape on mobile
- Play multiple games at the same time
- Real time game history viewable in-game
- Clearly defined paytables, viewable in-game
- Game number displayed for easy customer support
- Customisable game parameters per game
- Various RTP percentages per slot game
- Quick spin and quick stop for slots
- Gamble option for slots and Video Poker
- Multi-language
- Multi-currency

## Gaming Management System

A good gaming system lies at the core of any successful operator. Habanero offers its customers the ability to control and manage every aspect of their gaming business, including configuration, administration and player management.

The full-featured backoffice is designed to accommodate multiple languages, currencies and products on a single multi-tenant installation. One login gains access to everything, saving time and frustration.

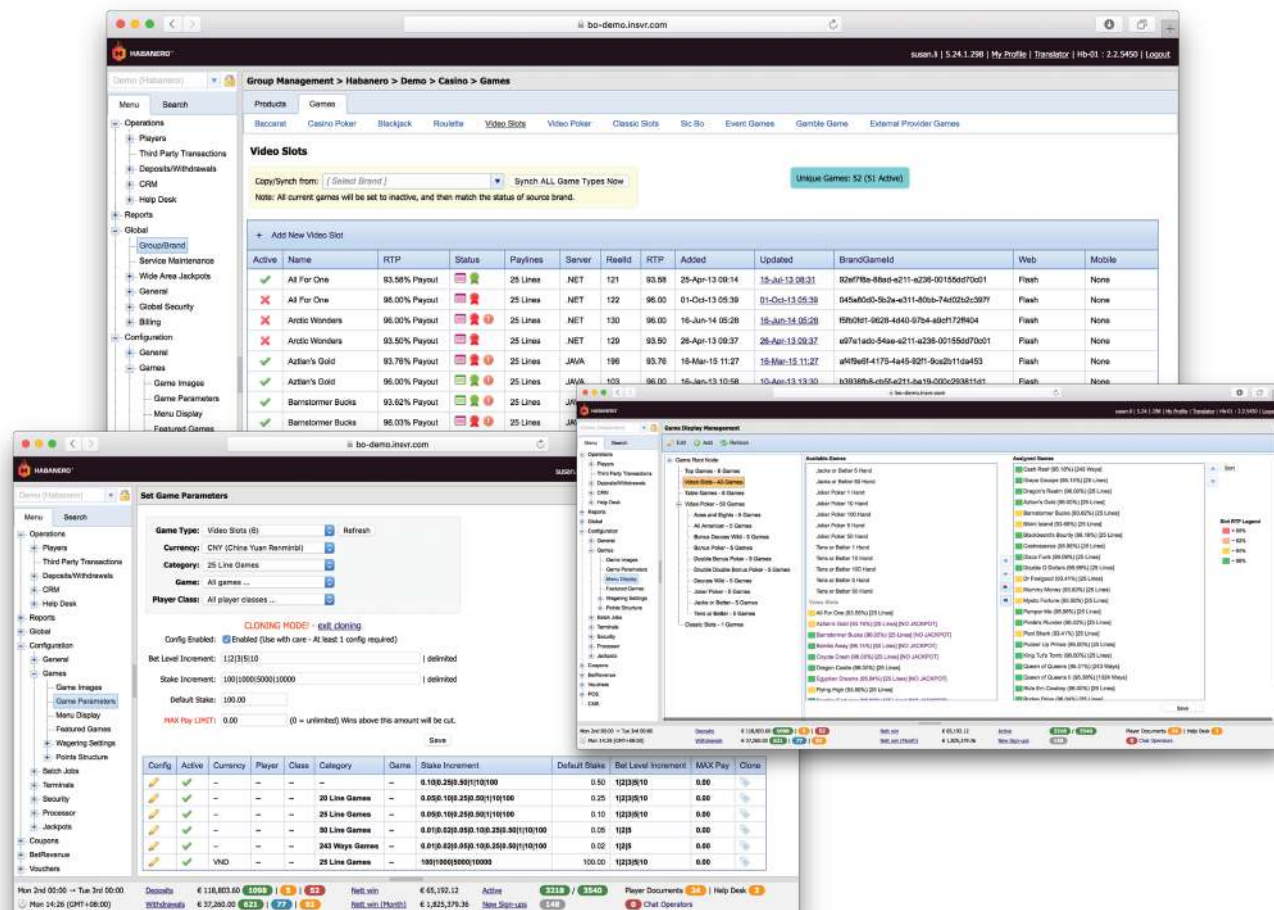


## Game Configuration

- Game parameters are configured by the operator by game-type, currency, player class, specific game, or specific player
- Game parameters can be changed at any time
- Customisable parameters are coin size, coin multiplier, default stake, min / max bet and maximum win
- Games may be arranged on the operators' website according to their preference

## Reporting

- Access to data for all currencies, languages and game products in one place
- All reporting data is visible in real time
- Split reports by channel (desktop vs. mobile)
- View multi-currency data blended into a single overview currency
- All reports distinguish between bonus and real money play
- Auto email report scheduling (daily, weekly and monthly) for designated users
- Drill down in reports to rapidly identify players or games that impact financial performance
- Easy monitoring of theoretical expected game RTP vs. actual
- Historical trends show volumes, Net Win, Wagering vs. Payout and general performance metrics
- Create dynamic SQL reports accessible in the backoffice or via the API
- All reports and grids can be exported to CSV or Excel
- Plugin external tools such as Google Analytics, Woopra, Geckoboard and New Relic



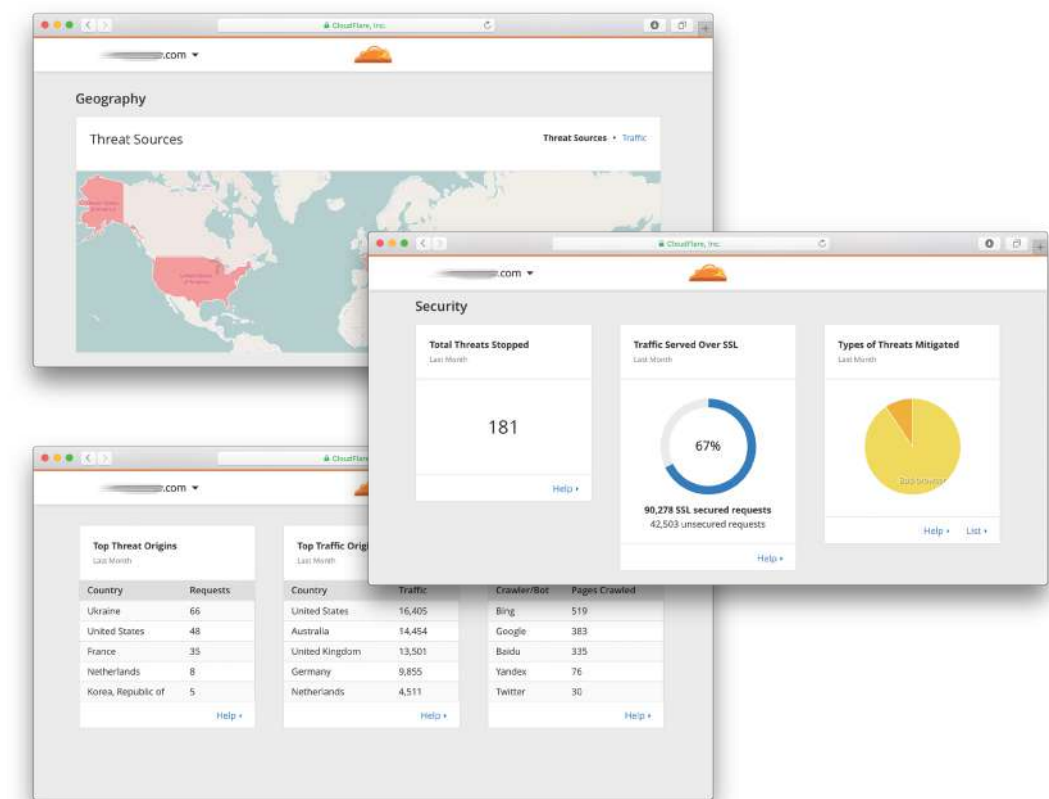
## Jackpot Management

- From one to four concurrent Progressive Jackpots can be configured for all or individual slot games
- Jackpots are configured in the operator's most popular currency and all other currencies are converted at contribution and payout time
- Jackpots can only be won by players wagering from their real money balance
- Jackpots are easily configurable to any desired RTP percentage, frequency of hit criteria and to average expected trigger level
- Optional 'do not trigger until funded' setting is available for all Jackpots



## Security and Fraud

- Backoffice roles and permissions are customisable per operator
- Auditing keeps a historical record of changed data
- Player exclusion / restrictions by GEO IP detection
- Deposit fraud detection and auto blocking of players
- All communication over SSL / HTTPS
- DDoS mitigation





## Player Management

- Player management is performed via a comprehensive player-sheet view
- Quick and clear view of Real balance, Bonus balances and Loyalty points with recent activity highlights such as last game played, last deposit, last live chat and more
- Real time game history with graphical game result display
- Player-centric reporting:
  - Game stats (wagers and payouts summarised by game)
  - Game transactions (wagers and payouts per game)
  - Account transactions (bonuses redeemed / converted, deposits / withdrawals, transfers in / out, etc.)
  - Balance Sheet which reconciles all of the players' activity (game transactions, account transactions, ad hoc bonusing, balance movements and pending withdrawals) with distinction between bonus and real money play
  - Player log events with filtering by importance levels
- Micromanagement of the player: Setting of individual min or max bet limits, give money / bonuses / loyalty points, etc.
- CRM tools: Create new Help Desk ticket, view support history, add and view player notes
- Backoffice users can set their own preferred starting view on the player-sheet and gain quick access to recent player searches

## Bonus Management

- All current industry options are supported – such as Free Spin bonuses - as well as unique bonusing innovations
- Enhanced bonus management on the casino / player portal allows for visibility and transparency in wagering accumulation or progress made
- In-game dialogues provide direct feedback to the player in terms of bonus status and outstanding requirements, notification of wagering completion or wagering not met conditions
- Bonuses are flexible and configurable to allow or disallow early withdrawal, or to allow withdrawal at any threshold point pending completion of wagering
- Wagering accumulation is configurable by game-type and player class with different settings for free money bonuses

## Loyalty Points

- Loyalty points are configurable by game-type and player class
- Points may be redeemed for a fixed value or in configurable levels / redemption bands, by player class
- Points can only be accumulated when wagering with real money

## Languages and Currencies

- 27 European and Asian languages, and any currency imaginable.



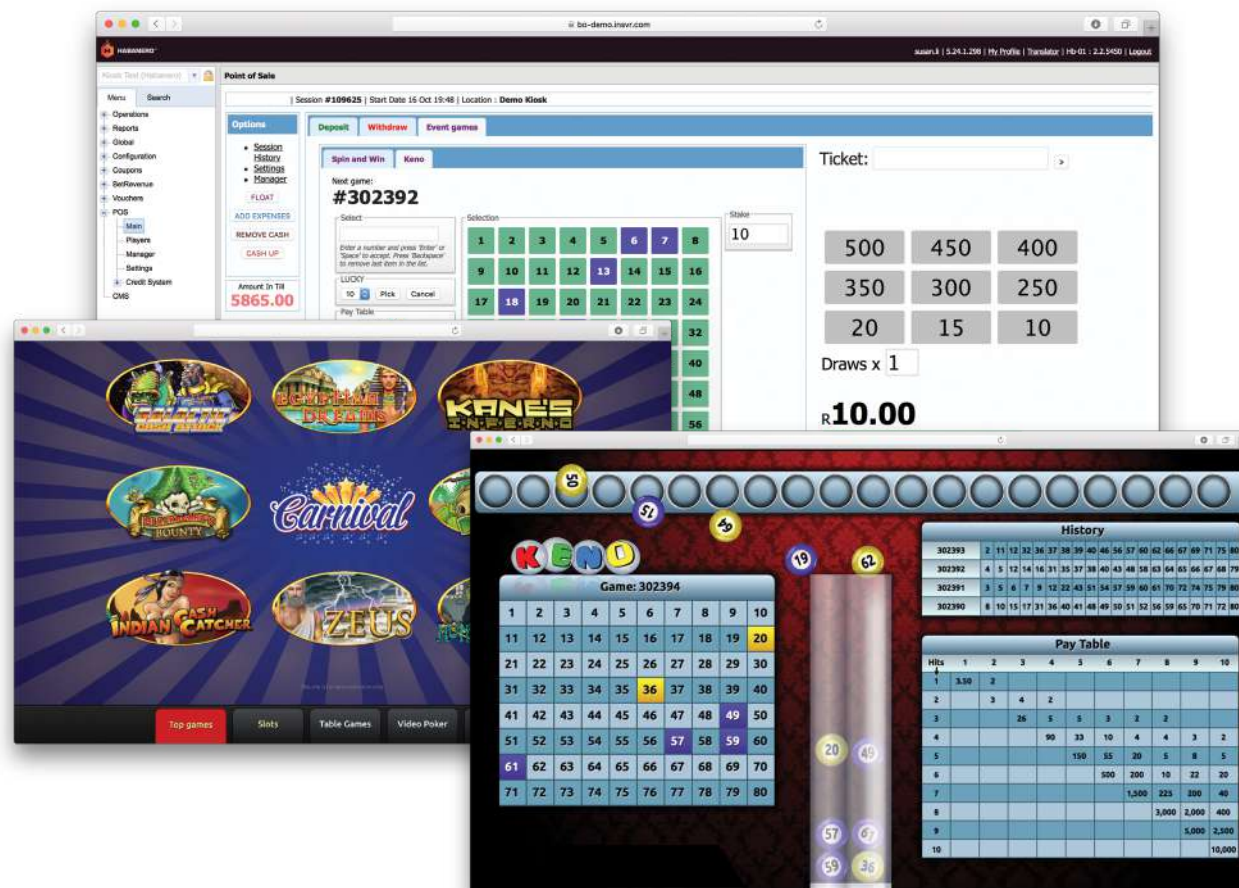
- Fully multi-language:
  - Game rules / paytables
  - Game interface
  - Website content
- All currencies are supported
- Currencies are financially reconciled and integrated into all reporting and game display systems based on ruling day-to-day exchange rates
- A single brand may offer multiple currencies
- There are no additional fees for additional languages or additional currencies

## Terminals

- The backoffice contains a Point of Sale solution for:
  - Game terminal play (deposit and withdraw)
  - Event games (purchase and payout)
- Multiple Financial Models
  - Standard
  - Prepaid Credit
- Touchscreen interface
- Multi-language Point of Sale and game terminal
- Integrated printing and barcoding
- Float management (add or transfer to other cashiers)
- Expense logging and tracking
- Cash removal management
- Event games
  - Random / quick pick, multiple bets per event, multiple future events per single ticket
  - Repeat players previous ticket bets
- Terminal game play
  - Assign players permanent username
- Lock player to location for withdrawal and / or game play
- Ticket expiration setting



- Live monitoring and historical reporting of cash in / cash out, active players (tickets), active cashiers
- Ticket expiration setting
- Quick cloning of locations
- Customisable printed ticket templates
- Advanced roles and permissions for cashiers including IP locking



## Client Support

Client support services are one of the most important elements of a sustainable relationship. The allocated account manager is dedicated to providing fast and efficient service to fulfil all client needs.



## Services

- Dedicated account manager assigned from contract commencement
- Support offered in English and Chinese
- Training on all offered games and backoffice systems
- Guide clients through set up and integration
- Assist with creation of users and allocation of roles
- Assistance with game configuration for the target market regarding optimal game configuration and Jackpot set up
- Assist aggregators with new brand creation and set up
- Assistance with marketing materials
- Assistance with promotions
- Keeping clients informed of new game releases
- Quick follow up on questions or queries
- Support Centre available 24 hours

## Product Solutions

Two product lines cater for online operators, aggregators and land-based operations.

### +Play and TerminalPlay

- **Simplicity:** Habanero allows for different languages, currencies and products to be accommodated on a single multi-tenant installation. The operator has one system to access - saving time and reducing costs.
- **Independence:** The platform allows all configuration and management to be done by the operator with no need to contact the software supplier.
- **Visibility:** Real time reporting for all products visible in one place.
- **24/7:** Performant and highly reliable. All updates are seamless and require no downtime.

## +Play

- **Add-on games:** +Play can be integrated into existing platforms for operators and aggregators looking for new content for their clients and players.
- **API:** The API supports various types of integration, including seamless or transfer wallets. Servers and CDN's in multiple locations worldwide ensure performance and reduced latency.
- **Bonusing:** Support for Free Spin and cash bonuses inside the Habanero environment with deep integration options. Bonus play is automatically excluded from royalty calculations.
- **Jackpots:** Individual brands can run their own internal Jackpots on any slot game while aggregators have the option to configure a wide area Jackpot over all of their brands.
- **Licensing:** Two options are available - a single licence for businesses running their own operations, or a master licence for aggregators offering content to multiple operators.
- **Easy Aggregation:** A "Clone Brand Option" allows for easy aggregator-controlled set up of new brands, taking away all manual and repetitive configurations that would normally be done by the software provider. This option allows aggregators to launch brands quickly.
- **Competitive:** Industry leading royalty rates.
- **Quick:** The entire set up can be done in a matter of hours.

## TerminalPlay

- **Terminals:** TerminalPlay is a simple easy-to-use ticket-in, ticket-out kiosk and POS system. Customisable game lobby, logos and available game-types let you tailor the look and feel.
- **Event Games:** Time-based games targeting land-based betting outlets, casinos or bingo halls. Bets are placed at a Point of Sale terminal, while games are displayed on in-store screens and run every few minutes.
- **Flexible business model:** Configure locations for standard cash-based operation or pre-paid credit control system. Allocate a royalty rate to certain locations for outsourcing to third party agents.
- **Multiple Locations:** For operators that have multiple shops, the "Clone Location Option" allows for easy set up of new locations.
- **Player Management:** Lock players to a location or share players across all locations, with the option for customers to play from home or anywhere outside a location.
- **Built-In Security:** Various security features help to control theft from staff, including: locking cashiers to certain IP addresses, live monitoring of all cashier sessions, expense logging and various automatic email notifications.
- **Cost Saving:** TerminalPlay is completely web-based and can be installed on any PC, using Windows or Linux. Perfect for operators that want to avoid the huge costs of land-based equipment.
- **Quick:** The entire set up can be done in a matter of hours.



## Contact Us

### Let's Connect!

If you are interested in any of our products, please contact us at [info@habanerosystems.com](mailto:info@habanerosystems.com), or visit our website at [habanerosystems.com](https://habanerosystems.com) to try our demo games.

Discover Sheer Gaming.