



# Modern Workwear

How to easily build a modern  
team look for your business.

**CARGO  
CREW**

# A warm welcome

We design essential uniform styles  
that deliver a complete working  
wardrobe for the whole team.





“The suits are comfortable to wear and a great fit for team members of all sizes and genders.”



**THE CARGO CREW WAY**

We prioritize ensuring every team member feels valued and comfortable by offering inclusive sizing

WE CREATE SUITING

# Designed to move

Months of development was undertaken to achieve the perfect balance of suiting with a modern fit, while still being ready for work.

The bi-stretch suiting fabric is designed to allow a full range of movement, while being lightweight to ensure all day comfort. Premium styling pushes our Taylor Suiting range beyond any other existing suiting in the market.





# 3 Piece Perfection



1. Essential Oxford Shirt
2. Tailored waistcoat
3. Modern Blazer

FLEXIBLE STYLES WITH

# Taylor Co-ordinates

One size doesn't fit all!

We get it, you want to be the boss of the pants (and skirts) you wear to work.

#WEAR THE PANTS



Taylor Midi Skirt



Taylor Blazer



Taylor Straight leg pant



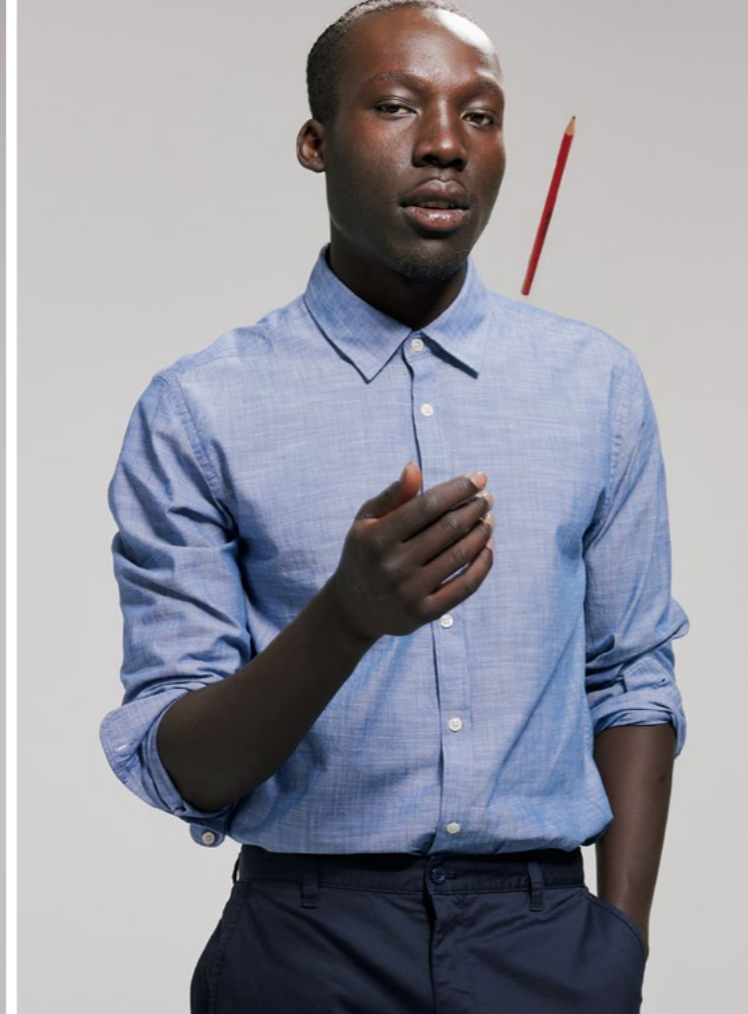
Taylor Suit Vest



Taylor Pencil Skirt



Taylor Wide Leg pant



## SHIRTS

Our contemporary shirt collection offers the perfect style for an essential everyday staple.

Within our signature shirt options, we offer OEKO-TEX® certified styles, including our much loved Oxford shirts, check shirt range and 100% cotton designs.



### WHAT IS OEKO-TEX?

OEKO-TEX® Standard 100 means every thread, button and entire garment have been tested & are free of 100 different harmful chemicals. Looking this good now feels even better.

# Elevate it

Serve up refined and memorable styling by combining our Taylor Suiting with our premium shirting to create a unique look for your team.

When your customer experience is everything, lead with elevated style for your staff, head to toe.





# A Navy Dream Team

Mix and match our Navy Taylor suiting pieces with our Smith Oxford Shirting & shirtdress for a trans-seasonal uniform for your team, across various roles.



## YEAR ROUND STYLING OPTIONS

Giving your team variation in uniform styles gives them options, while still looking on brand & united.





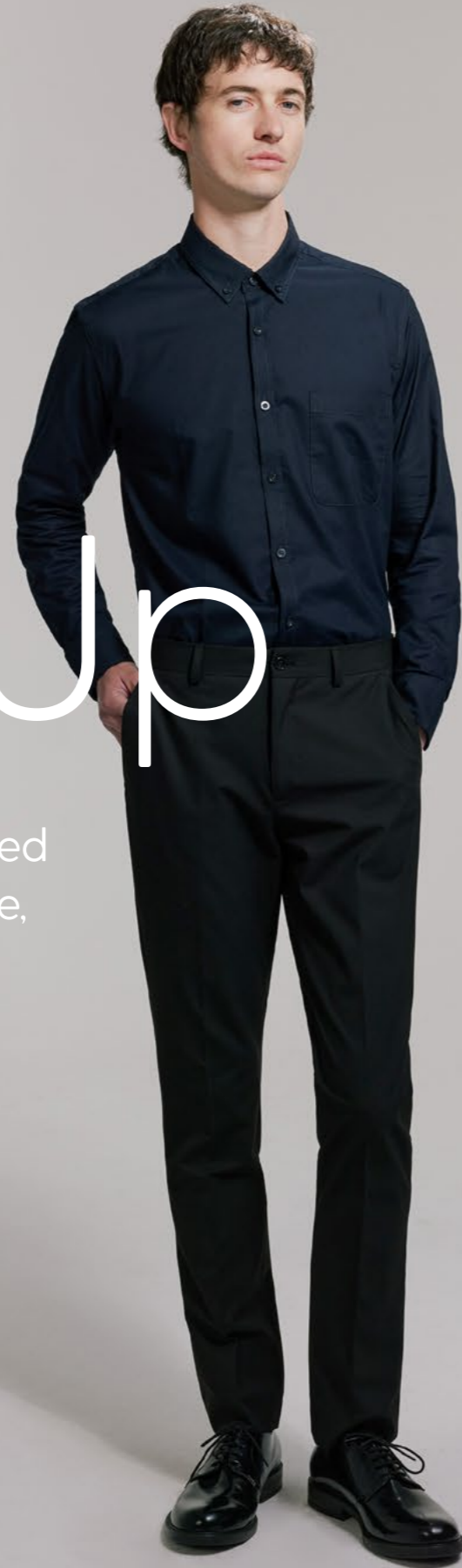
An elegant balance of modern and timeless, Saville flows seamlessly from boardroom to the sales floor, to business function.

The cool grey texture works with crisp white, navy or black, making it a great addition to any uniform range & offering variety for your staff.



# Mix It Up

Our suiting coordinates are designed to be styled together, providing role, gender & department diversity.



## NO-FUSS BLOUSES

Dress our suiting co-ordinates up and down with no-iron easy care tops and blouses. Designed to flatter all shapes & sizes for all day comfort at work.



### STYLE TIP

Layer up with our range of knits and cardigans for transeasonal wear.



Performance  
Meets  
Presentation

# Modern sport-luxe suiting look

Sports-lux meets modern corporate with our range of polo shirts, crafted with performance properties at their core. No throw away smelly polos here.

Suited for the boardroom, boutique hotel or sales floor, this versatile piece offers a premium more casual alternative to a button-down shirt.

Paired with our suiting, its the ultimate blend of comfortable performance fabric and elevated detail for your business. The seamless colour combinations for easy team styling.



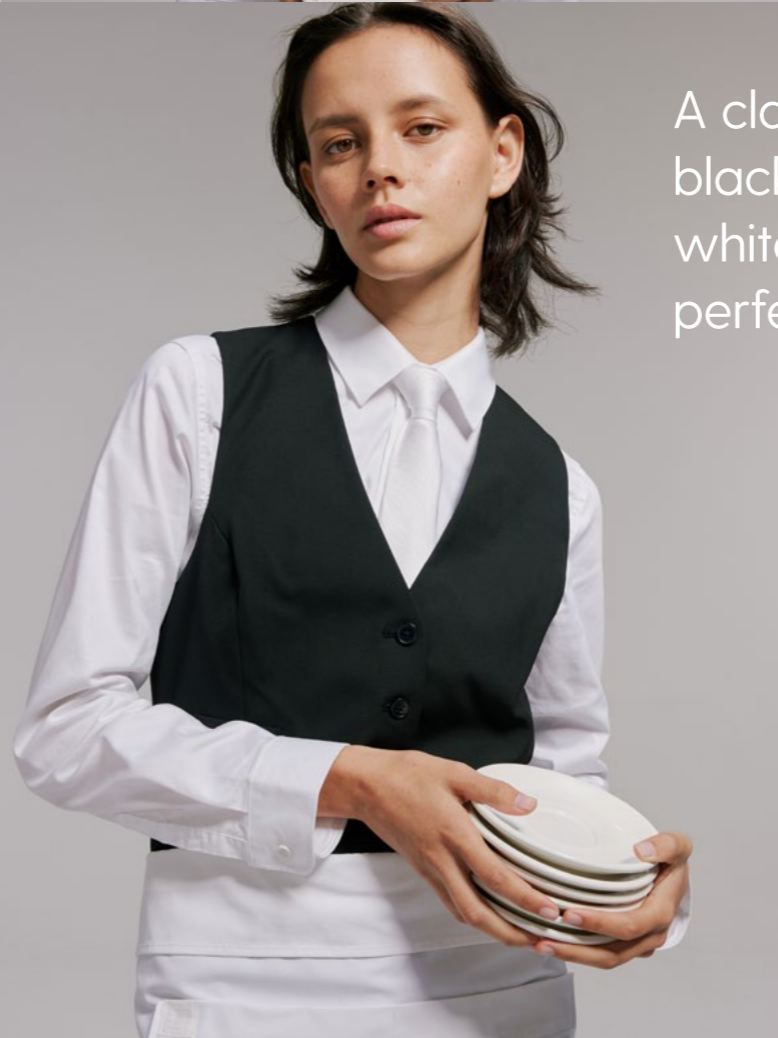


## HIT RELAX Add Chinos



For warmer climates and a more casual feel you can easily pair our suit blazers with stretch chinos.

**STYLE TIP:** add a belt for a polished finish.



# Service Ready

A classic tailored vest in crisp black, paired with a fresh white shirt is timeless service perfection.

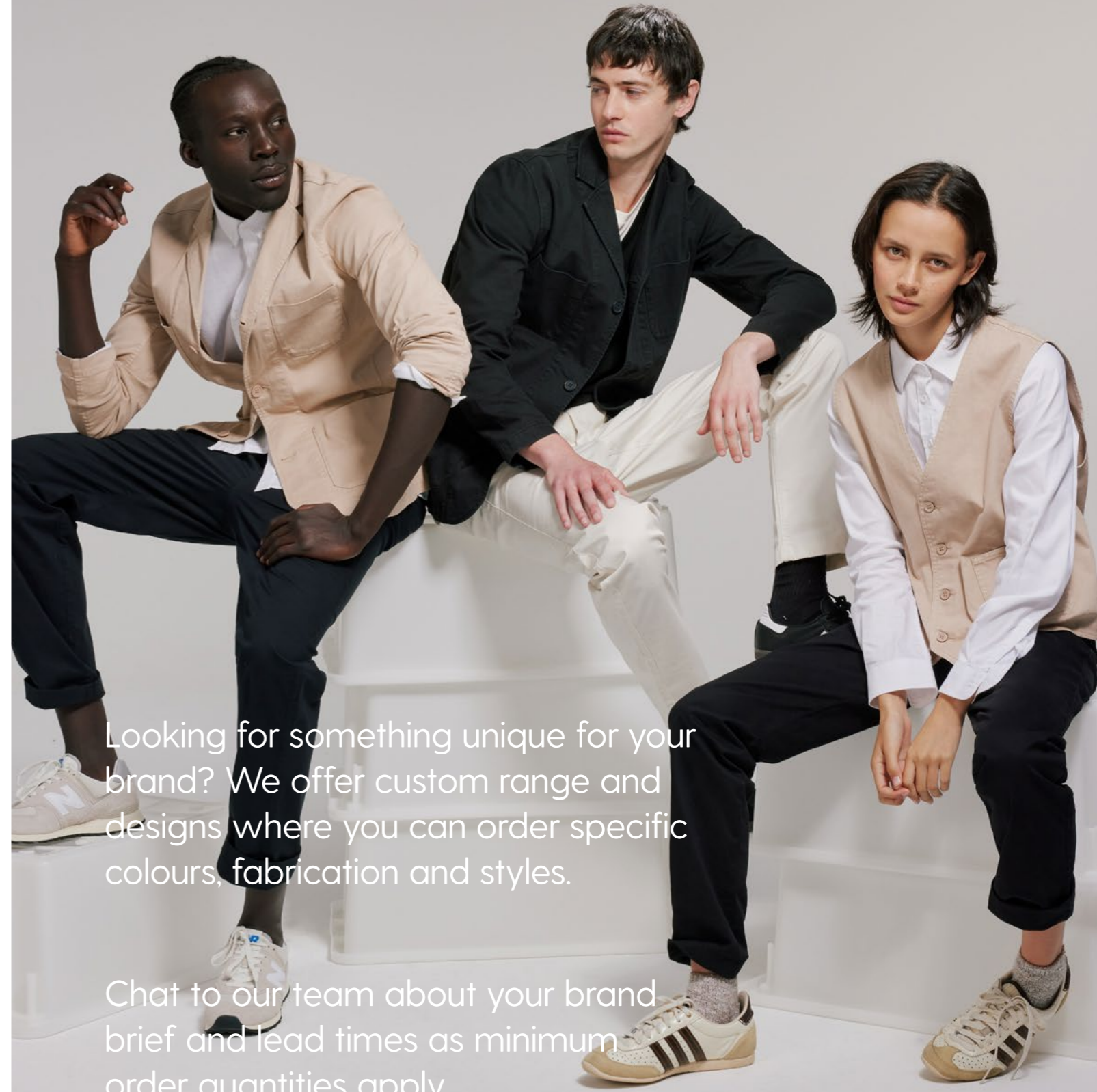
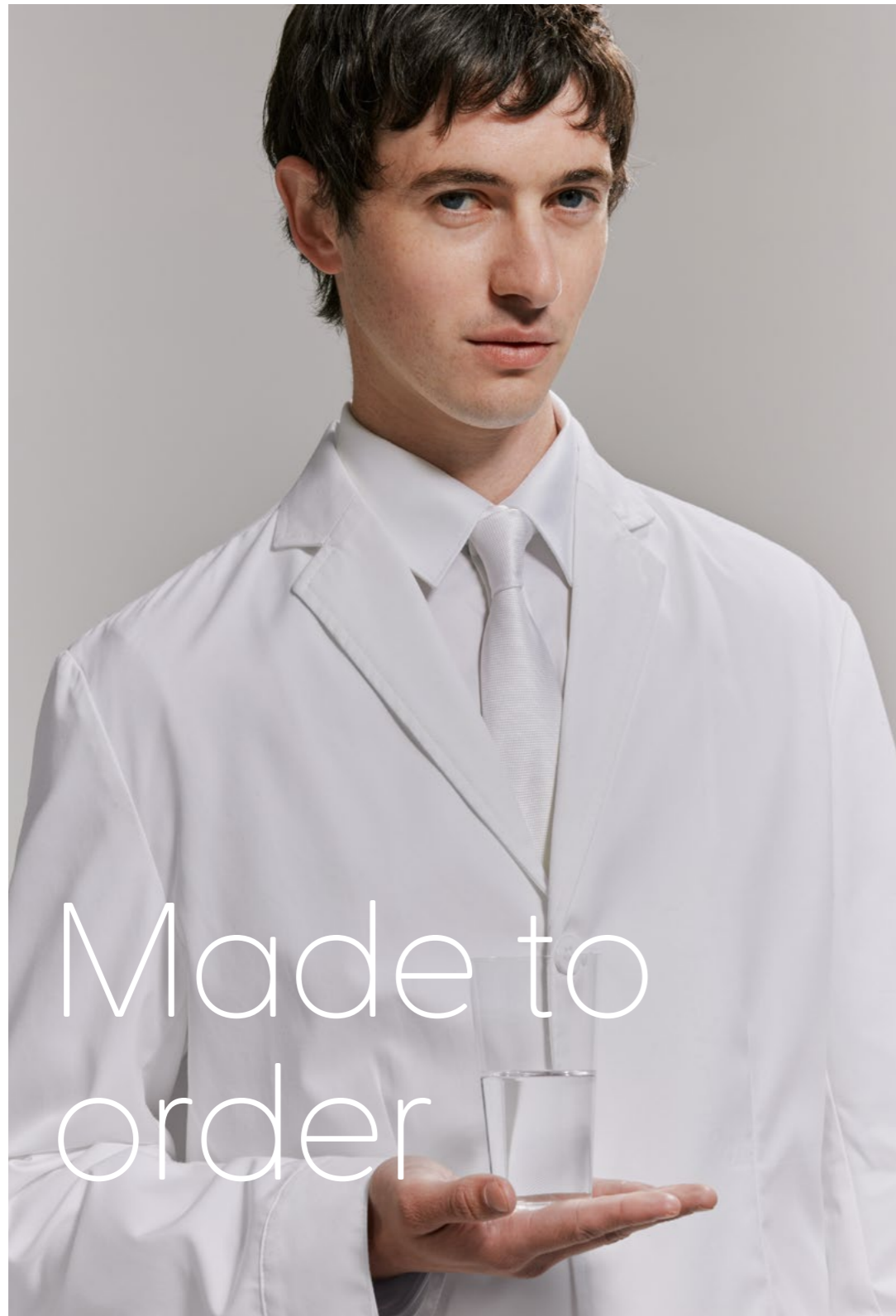
# Layer Up!

Keep your team warm & comfortable in quality uniform outerwear.

Unisex styles for gender inclusivity and simplified staff sizing.







Looking for something unique for your brand? We offer custom range and designs where you can order specific colours, fabrication and styles.

Chat to our team about your brand brief and lead times as minimum order quantities apply.



# Made to order

Looking for additional styles in our Saville suiting range like vests & coordinates? We offer a made to order program. Chat with our amazing team today about your requirements & lead times.



[CHAT TO OUR TEAM](#)

# Add your Brand

Let your uniform speak your brand language, with our quality in-house custom embroidery.



# How can I add colour?

The power of classic colours like navy, grey, black and white, means your uniform has longevity and doesn't date.

Adding accessories in pops of colour is a great way to unite your team visually. They can be easily updated, without a full uniform refresh and engage your staff. They can also be sold as brand merchandise.

## Highlight your colours

- A custom scarf
- Ties and bow-ties
- Brand Pins
- Tote bags
- Hat & Caps

Chat to our team about accessories and merchandise



# Complete the look

Work belts are the perfect finish for a professional looking uniform or a way to bring texture & personality to your overall look. All our belts are designed to work seamlessly with our pant, skirt & dress range to provide numerous styling options.



Men's Joe Belt



Women's Mae Belt



Webster Striped Belt



Taylor Belt

### STYLE TIP

Chat to us today about MOQs for custom brand coloured belts to complete your team look.





# The Cargo Crew Difference

## Efficiencies for your business:

- Our range is in stock managed only by us
- Onsite warehousing – on time dispatch & delivery
- Consistent quality every order, managed by our in house QA
- No minimums for easy reordering
- Inclusive sizing
- In house embroidery experts & Japanese Machinery

## Premium Australian Service:

- In house Client Service Team – we want to understand your business
- Complete Uniform Program Management
- Styling advice for your team
- Curated uniform ranges to suit your brand

## Uniform Program Management:



**1** Dedicated Client Service Specialist



**2** Range Development



**3** Production & Communications



**4** Roll-out & inventory management



**5** Online account platform



**6** Warehouse & distribution



**7** Ongoing first-class client service



# In Good Company



"I couldn't be more excited. Cargo Crew have dressed the entire Crew and I think everybody looks really smart."

CURTIS  
STONE

"We wanted to have a more rustic, casual atmosphere in the Studio. The looks also really suits the staff we employ and they love wearing them."

**A** Art Series



"Cargo Crew has made our transition into a new modern uniform, seamless and easy. From our first initial meeting, to the roll out, to ongoing supply of all 110 stores nation wide. We just love our new modern uniform!"

*Beacon*  
LIGHTING



"I cannot tell you how much GREAT feedback I have had from our team on their new uniforms. They love them and I have to commend your team on design, delivery, service, comfort, style, class. All of it. The whole Cargo Crew operation is an absolute dream."

MELBOURNE  OLYMPIC PARKS



"Cargo Crew are the best at problem solving uniform issues for our team. Whether it be sourcing alternate products, designing custom items or expediting dispatch, no problem is too hard."

**OAKS**  
HOTELS • RESORTS • SUITES

# Let us style your brand!

At Cargo Crew we are committed to quality service, and to creating uniforms that staff want to wear. Chat to us today!



## GET IN TOUCH

Our team of passionate uniform experts are here to assist you with all your uniform styling needs Monday to Friday 9am-5pm AEST.

**P: +61 3 9411 9850**  
**E: hello@cargocrew.com.au**

## CARGOCREW.COM.AU

Visit [cargocrew.com.au](http://cargocrew.com.au) to shop the modern uniform.

## SHOWROOM

If you are in Melbourne we would love to welcome you at our destination showroom. Here our team of stylists can curate the perfect uniform for your brand or business.

**4 Scholar Drive**  
**Bundoora VIC 3083**  
**Australia**

## CARGO CREW TO YOU

Book in a time for us to visit you. A great way to see our range in person if you can't make it out to our showroom.

It's also a really efficient way to have try on sessions with your team when rolling out a uniform.

**Contact us to arrange a visit:**  
**P: +61 3 9411 9850**  
**E: hello@cargocrew.com.au**



# CARGO CREW

## CONTACT THE EXPERTS

4 Scholar Drive  
Bundoora  
Victoria 3083 Australia

+61 3 9411 9850

[hello@cargocrew.com.au](mailto:hello@cargocrew.com.au)

