

Hello! We're

**CARGO**

**CREW**

CARGO CREW

## FROM OUR FOUNDER

Cargo Crew is a purpose-driven business with a passion for original design and a single-minded focus on creating the world's best uniforms.

We're here to help you curate a look that enhances your customer's experience while inspiring and uniting your team.

We look forward to servicing your needs, and together help your brand and your crew look the best in the business!

*Felicity*

Founder & Creative Director

©CARGO CREW  
COMMERCIAL IN CONFIDENCE





# Overview

- Identify the HOME brand within the real-estate space for a new way of renting
- Reflect the values of high quality and sustainability
- Elevate the look and presentation of the HOME staff

Cargo Crew creative concepts deliver fresh, on-style and on-concept looks that celebrate the now.

With an edge of sophistication, Cargo Crew looks to develop a uniform wardrobe centred around this contemporary messaging supporting the opportunity to further enhance the immersion of HOME customer experience



home\_」

# Range Overview

General Manager - Assistant General Manager - Marketing/Events  
Leasing Manager - Leasing Agent - Resident Services – Facilities Manager - Maintenance

# Smith Oxford Shirt

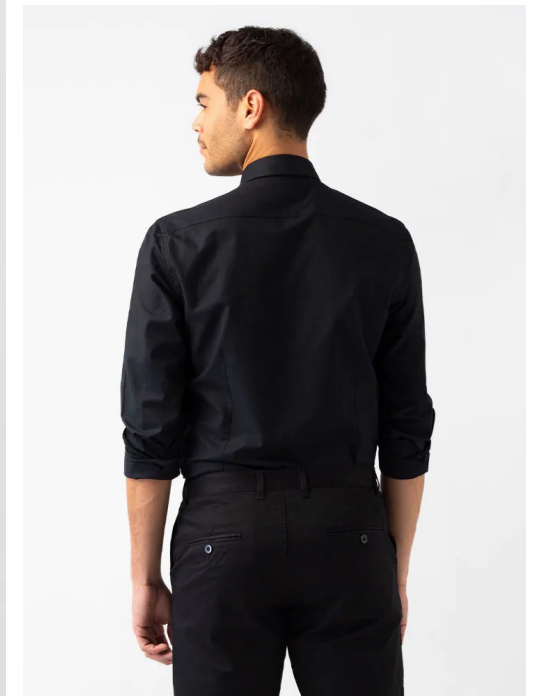
**BLACK**

The Smith Oxford Shirt in Black is a staple uniform piece that speaks understated style. This must-have shirt is a classic and versatile wardrobe item perfect for many industry uniforms.

- Cotton / Polyester
- Smart modern cut
- Lightweight easy-care fabric
- Matte black buttons
- Charcoal contrast trim at back neck
- Left chest pocket



*Matte Black Buttons*



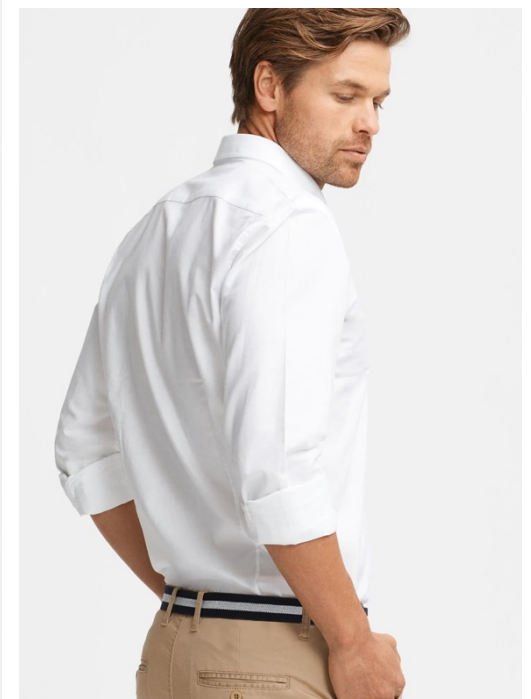
# Smith Oxford Shirt

WHITE

The everyday classic uniform shirt, perfect paired with chinos, under-blazer layer or styled with an apron, the Smith Oxford Shirt in White is the go-to uniform shirt for modern crews globally.

- Lightweight and durable cotton/polyester blend
- Flattering modern cut
- Wear with sleeves down or rolled for relaxed styling
- Easy-care fabric
- Left chest pocket

*Pair with Todd Chinos*



# Smith Oxford Shirt

WHITE AND BLACK

The Short Sleeve Smith Oxford Shirt in is a classic wardrobe piece that suits many uniform needs. It is designed as a traditional Oxford style with button down collar and left chest pocket for a clean and modern look.

- Lightweight and durable cotton/polyester blend
- Flattering modern cut
- Easy-care fabric
- Left chest pocket

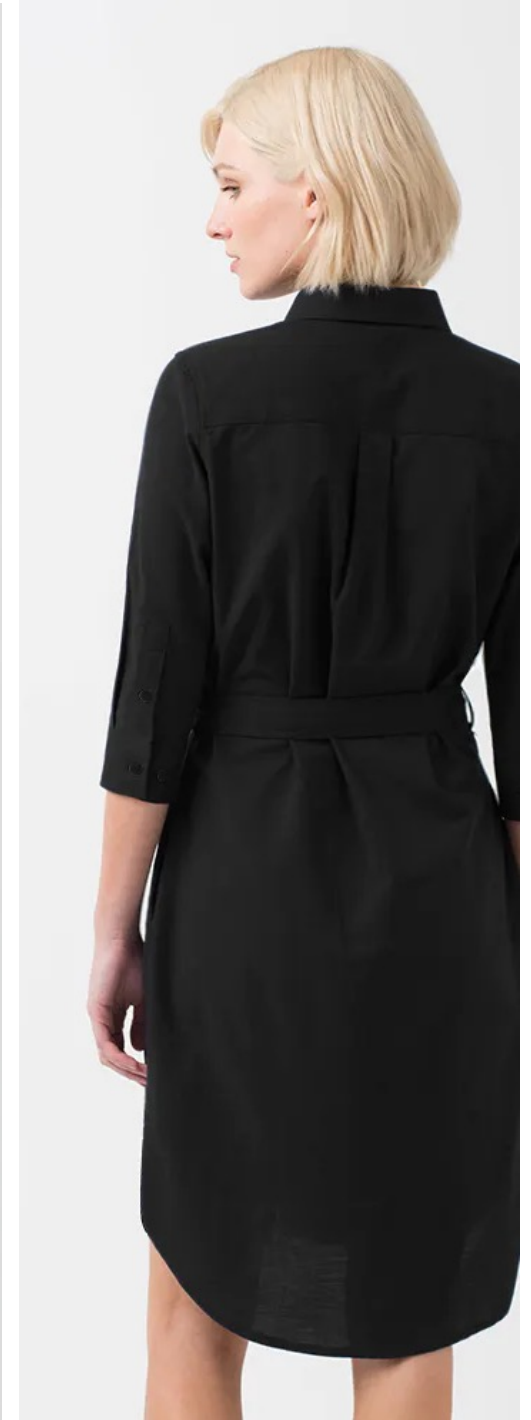


# Smith Oxford Dress

**BLACK**

The Women's Smith Oxford Shirdress in Black embodies a smart-casual appearance, with a slightly straighter cut and removable waist tie to bring in the dress for a more fitted look when required.

- Cotton / Polyester
- Flattering straight cut that sits longer at the back hem
- Detachable self-fabric waist tie
- Handy side seam pockets
- Modern 3/4 length sleeves
- Lightweight easy care fabric



# Smith Oxford Shirt

KHAKI

The Smith Oxford Shirt in Khaki is a must-have work shirt. The Khaki colour is enhanced by contrast cream buttons giving your staff a clean and modern look in any environment.

- Lightweight and durable cotton/polyester blend
- Left chest pocket
- Contrast cream buttons
- Button down collar



*Button-down collar*



# Sophie

IVORY and BLACK

The Sophie Blouse embodies feminine sophistication while delivering all day comfort and easy-care. Designed as a more relaxed fit, Sophie creates a soft silhouette that looks just as neat and smart un-tucked as it looks tucked in.

- 100% polyester, silk-look fabric
- Soft and breathable to wear
- Minimal ironing required
- Wide hem detail with side splits
- Bracelet length sleeves with pleat detailing

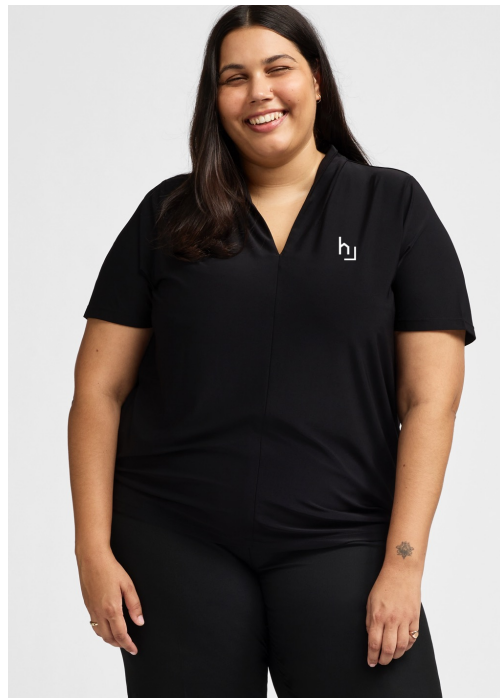


# Annouk Top

BLACK

A versatile, comfortable essential for any modern wardrobe.

- Relaxed silhouette designed for comfort and movement
- Inclusive style suiting a broad range of shapes and sizes
- High back neck with ruching detail
- 95% Polyester, 5% Elastane



# Rosie Waterfall Cardigan

**BLACK**

The Rosie is a corporate uniform classic with a modern twist giving comfort and sophistication to your work wardrobe.

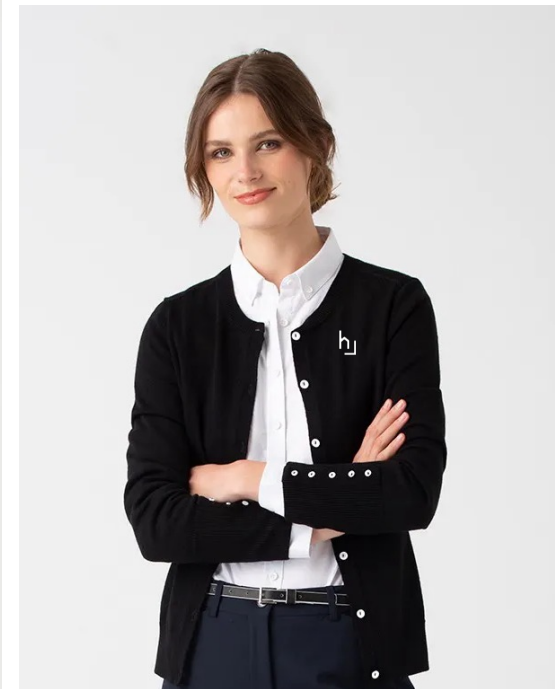


# Crew Knit Jumper and Cardigan

**BLACK**

The Crew Knit in Black is an ideal layer item that is light enough to be worn throughout the year, yet heavy enough to add warmth.

- 50% Wool / 50% Acrylic
- Classic round neck line
- Super soft finish
- Machine washable
- Do not tumble dry

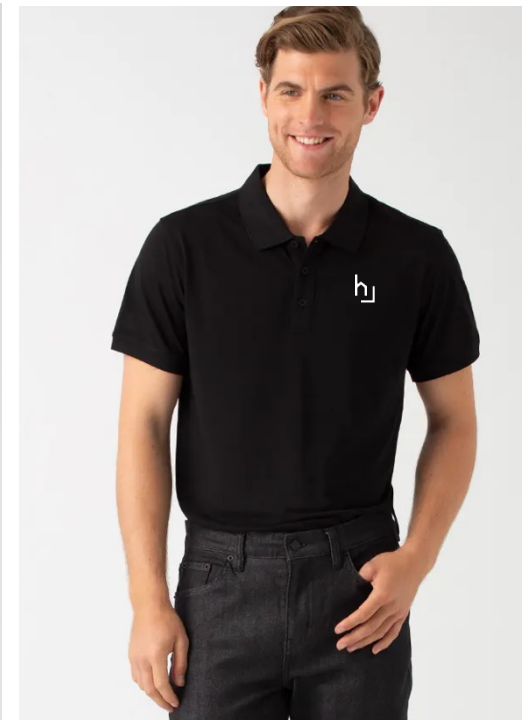


# Parker Polo

**BLACK**

Here's what makes Parker the Best Uniform Polo on the market:

- Created from genuine technical fabric that dries 4 x faster than cotton.
- Lightweight with inherent moisture wicking functionality that keeps you feeling comfortable all day.
- Drirelease® fabrics prevent odours from clinging due to its quick dry performance, keeping smells at bay.
- Functionality that will not wash out over time, delivering superior colour fastness and unmatched longevity to the life of the garment. The fabric has been independently tested to prove it!

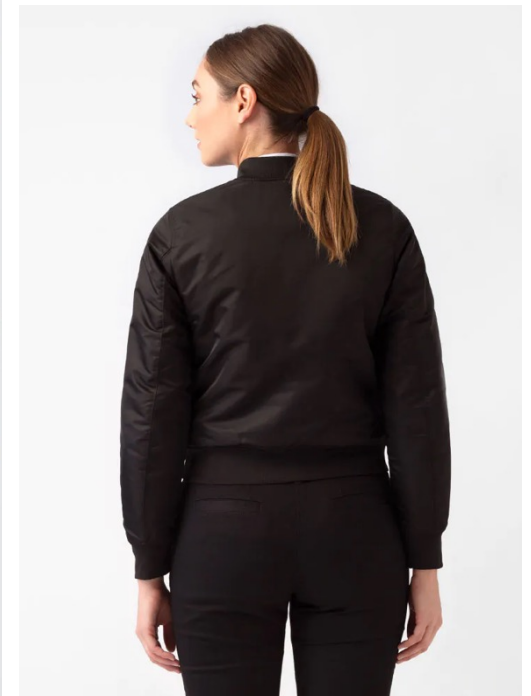


# Benji Bomber

BLACK

Where sports luxe meets elevated functional design, the Benji Bomber delivers a polished and contemporary uniform style.

- Water repellent
- Premium metal YKK zipper
- Quilted lining for insulated warmth
- Hidden openings for logo embroidery access
- Ribbing is Polyester/spandex so it will not pill
- 2 pockets with stud closure to keep items safe



# Jude Softshell

BLACK

We've redefined the traditional softshell jacket. The result: impeccable-looking design meets fuss-free function for your team.

- 4-way stretch fabric
- Durable & breathable
- Micro fleece for insulation
- Water-resistant
- High collar for wind and sun protection

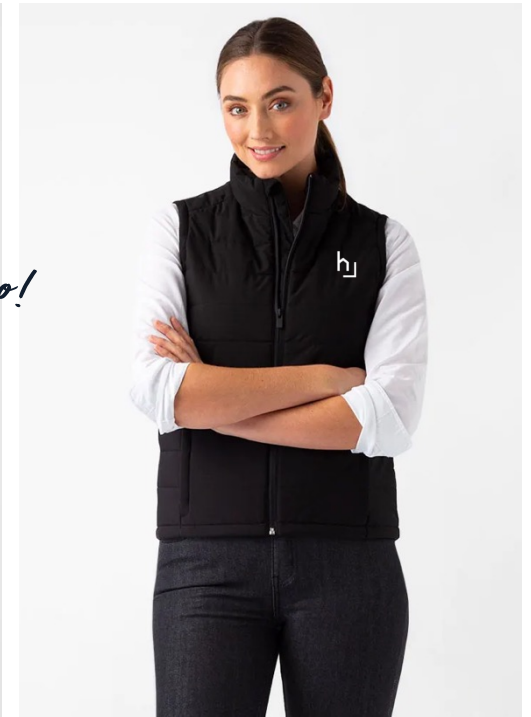


# Scout Puffer

BLACK

Whether you work outdoors, indoors or in varying climates, the Scout Puffer Vest in Black is the perfect layering addition to any work uniform.

- 100% Polyester outer & lining
- Renewably sourced, polyester filling with high recovery, warmth retention and quick drying properties
- Side pockets with zip closure
- High collar around neck for extra warmth and cover



# Riviera Tee

**BLACK & WHITE**

This striped tee is a fashion staple in the latest monochrome colour palette that can be coordinated for casual hospitality uniforms, or dressed up with a Taylor Blazer for corporate styling.

- 95% combed cotton jersey/5% elastane
- Super soft fabric texture
- Machine washable
- Excellent stretch and recovery fabric
- Flattering solid stripe design



# Plain Tee

**BLACK and WHITE**

This is the perfect black t-shirt for a variety of hospitality and retail environments, and an ideal addition to suit any staff uniform.

- 100% Combed Cotton
- Slim fit
- Crew neck
- Preshrunk to minimise shrinkage



# Men's Taylor Suiting

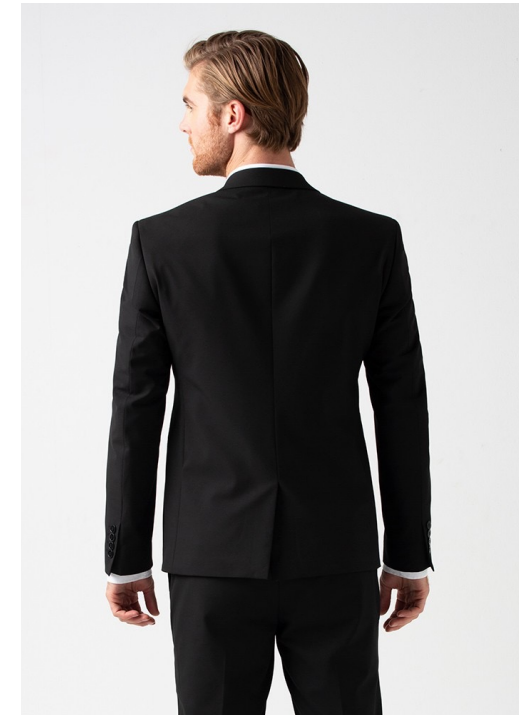
## BLACK

Our Men's Taylor Suiting in Black elevates our Modern Uniform offering to deliver a cohesive staff look that works from the boardroom to front desk.



## Taylor Suiting

The development of our Taylor Suiting range delivers not only on quality and fit, it's now the essential staple base that provides the building blocks of endless contemporary uniform combinations.



## Features:

- Fabric composition: 67% Polyester, 28% Viscose and 5% Elastane
- Bi-stretch fabric for ease of movement
- Fully lined Blazer including signature piping
- Pants feature modern straight leg fit
- Dry Clean Only

---

## Taylor Suiting

Our Women's Taylor Suit in Black features specially developed bi-stretch fabrication designed to move, allowing for a full range of movement, while being lightweight to ensure all day comfort.



---

### Features:

- Fabric composition: 67% Polyester, 28% Viscose and 5% Elastane
- Bi-stretch fabric for ease of movement
- Fully lined Blazer including signature piping Notch Lapel Collar
- 1 x button finish with 2 x side jet pockets
- Modern straight leg fit
- Ankle skimming length with neat blind hem

# Women's Taylor Suit

## BLACK

Garment overview available in website description section, keep it short & sweet.

# Taylor Midi Skirt

**BLACK**

Taylor Midi Skirt in Black is the perfect mid-length uniform skirt. Designed as a mock-wrap skirt, the Midi gives the flattering look of a wrap skirt while still remaining comfortable and secure.

- Bi-stretch fabric with stretch lining for ease of movement
- Mock wrap skirt in modern A-line cut
- Professional mid-length
- Belt loops (belt sold separately)
- Side zip & top button to fasten



# Taylor Wide Leg Pants

**BLACK**

Taylor Wide Leg Pant in Black is designed for comfort & movement and to flatter every body shape.

- Bi-stretch fabric for ease of movement
- Modern wide leg with crease for elevated finish
- Ankle skimming length and high waisted
- Signature pleat at front leg
- Side pockets
- Belt loops (belt sold separately)

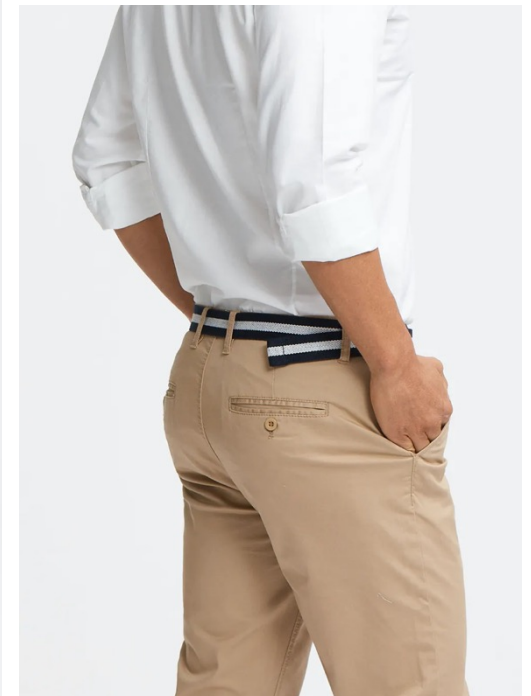


# Todd Chino

**CAMEL and BLACK**

Cut with a classic straight-leg and tailored fit, the Todd chinos are a fresh alternative to your usual work pants or jeans.

- Comfortable cotton/elastane fabric blend
- Garment washed for extra comfort
- Sophisticated tailored fit
- Classic straight leg cut
- Belt loops
- Two front pockets
- Two back pockets with buttons



# Our Promise

## ORIGINAL DESIGN

Cargo Crew is purpose-driven business with a passion for original design and a single minded focus on developing higher performing uniform products that last.

We design our entire range from our Melbourne HQ and engage with our long term manufacturing partners directly.

## EXPERT TEAM

The best uniform programs are created by a hands-on, team of experts with experience curating, project managing and rolling out to businesses to meet their unique needs.

Our talented team come from diverse backgrounds including design, retail, tech, advertising & logistics.

## EXCLUSIVE FABRIC INNOVATION

More than 1,000 hours per annum is invested in fabric R&D Creating & utilising industry leading fabric technology including Drirelease®, Bi-stretch Suiting & Fight The Fade™ fabric technology.



 drirelease®

## COMMITTED TO SUSTAINABILITY

Our commitment to make our products genuinely more sustainable is an on going focus for the Cargo Crew team.

From compostable packing to removing plastic wherever possible through to the development of sustainable fabrics we are driven to be the change we want to see.

## ETHICAL SUPPLY CHAIN

We work with the best!

Our long term manufacturing partners are audited and adhere to international business practices and ethical standards that include Sedex and BSCI certification.



## CLIENT FIRST APPROACH

Cargo Crew is proud to have long term partnerships with our clients. We partner with them to create a uniform solution that can evolve as their brand does all whilst providing ongoing authentic, reliable & engaging service.

Ask our clients!