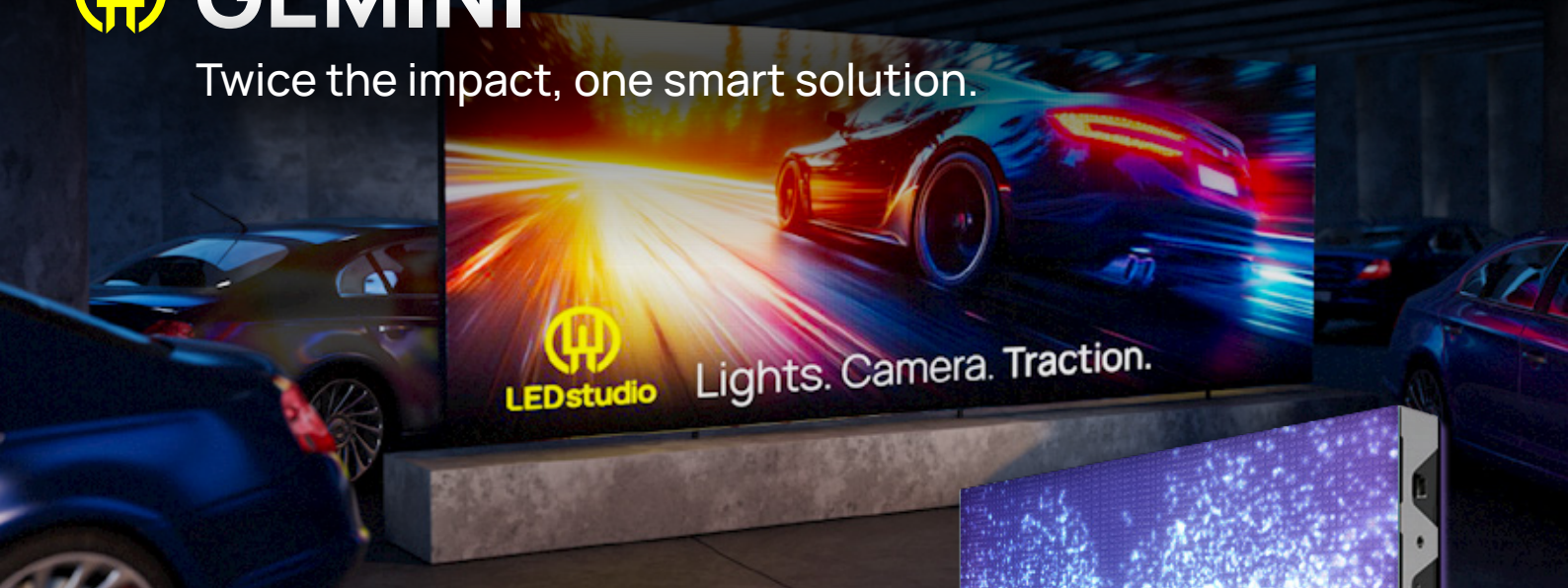




# GEMINI

Twice the impact, one smart solution.



## Dual-Sided LED. One Cabinet.

GEMINI is a revolutionary dual-sided LED display that hosts two separate screens - on a single, ultra-slim cabinet. Ideal for environments where you need high-impact visuals in both directions, GEMINI reduces weight, installation time, and cost - without compromising performance.

### Key Benefits at a Glance:

#### Two screens, one cabinet:

Display content on both sides - independently or mirrored - using just one cabinet.

#### Mix pixel pitches:

Customise each side for different viewing distances/ lighting conditions - ideal for storefronts, retail concourses, or exhibitions.

#### Half the weight, half the structure:

Lighter than two separate cabinets, Gemini reduces metalwork, mounting, and logistics.

#### Independent content & power:

Separate data inputs and power supplies mean each side runs securely and independently.

#### Ultra-slim 58mm profile:

A sleek, modern design with minimal depth for easy integration into space-conscious environments.



### Dual-Sided with Independent Brightness

Each display side adjusts brightness for indoor or outdoor use, ensuring clear, high-visibility viewing anytime.





### Dual-Sided Display

Supports simultaneous display on both sides, with the option to mirror or show different content, adapting to diverse needs.



### Energy Efficient

The advanced energy-saving design delivers low power consumption while maintaining high brightness, HDR visuals, and 16-bit greyscale support.



### 1:1 Ratio

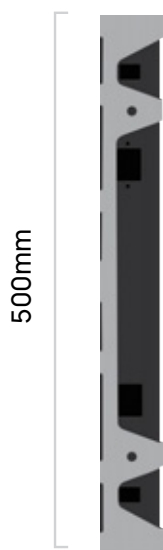
500 x 500mm Panels. Perfect symmetry for design-led installs.



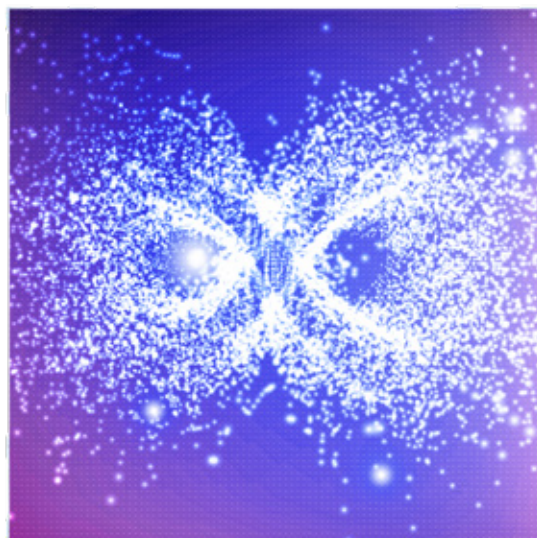
### Smooth Playback

Fast refresh rates and low latency for flawless visuals - ideal for live content and dynamic campaigns.

## Cabinet Dimensions



58mm



500mm





## Smart Signage for Travel Hubs.

GEMINI is the perfect dual-sided LED solution for airports, combining wayfinding and advertising in one compact display. Use one side for flight info or directional signage, and the other for commercial content like retail promotions or partner branding.

In check-in zones, security areas, baggage claim, and lounges, GEMINI helps streamline the passenger journey while creating valuable new media space. With high foot traffic and long dwell times, airports offer the ideal environment to maximise GEMINI's double-sided impact - all without increasing the display footprint.





## Retail-Ready. Space-Smart.

GEMINI brings powerful, space-saving impact to retail environments. With dual-sided LED, it captures attention from both directions - perfect for store entrances, aisles, and concourses. Promote in-store offers on one side and brand campaigns on the other, or tailor messaging to different traffic flows.

Whether it's in a supermarket, shopping centre, or retail park, GEMINI creates dynamic opportunities to influence purchase decisions, enhance the customer journey, and maximise promotional space without adding clutter.

# Specifications

Category	G19	G19 Low Scan	G26	G26 Low Scan	G39
Pixel Pitch(mm)	1.95		2.6		3.91
Module Size (mm)	250x250				
Module Resolution(W×H)	128x128		96x96		64x64
Unit Composition(W×H)	2x2				
Cabinet Size(mm)	500x500x58				
Cabinet Resolution(W×H)	256x256		192x192		128x128
Pixel Density(Dots/m²)	262144		147456		65536
Cabinet Weight(kg / lbs)	7.1/15.6				
Cabinet Flatness(mm)	≤0.15				
Brightness(nits)	0-800 (adjustable)	0-1200 (adjustable)	0-1000 (adjustable)	0-1200 (adjustable)	
Color Temperature (K)	2000-12000 (adjustable)				
Viewing Angle(H/V)	160°/160°				
Contrast Ratio	6000:1				
Peak Power Consumption(w/m²/w/m)	600/56	800/74	550/51	660/61	
Average Power Consumption(w/m²/w/m)	240/22	320/30	220/20	260/24	
Power Supply Requirements	AC100-240V (50-60Hz)				
Frame Rate(Hz)	50/60				
Image Refresh Rate(Hz)	3840				
Gray Level(Bit)	14-16				
Operating Temperature(°C/°F)	-10 ~ +45 / +14 ~ +113				
Operating Humidity (%RH)	10-80 anti-fog				
Maintenance Method	Front maintenance				
Protection Level	IP41				

\*Scan Rate and Refresh Rate subject to project specifications.

\*Average power consumption is subject to display brightness and pixel configuration.

\*All data contained is subject to change based on project requirements.







# LEDstudio

[www.theledstudio.com](http://www.theledstudio.com)  
[sales@theledstudio.com](mailto:sales@theledstudio.com)

