



# STADIA Perimeter

ELEVATING MATCH DAY EXPERIENCES



## EXCEPTIONAL PITCH-SIDE DIGITAL SIGNAGE



UEFA Capable\*



Customise Your Display Height



Up to 6000 Nits



Multiple Pixel Pitches - 6.67, 8.33, 10



Power & Data Redundancy



Front & Rear Service



Single Cable Power & Data



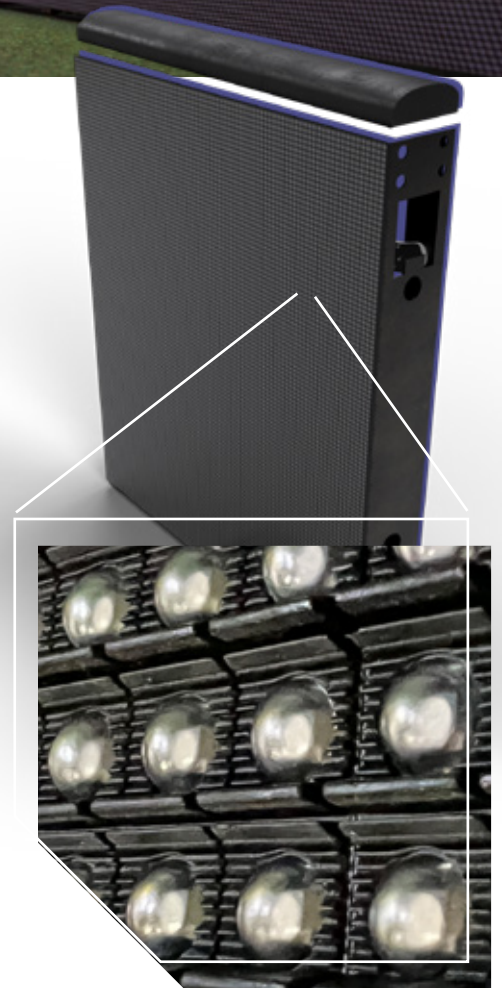
Indoor & Outdoor Use



High Refresh Rates



160/120° Hrzt/Vrt Viewing Angles

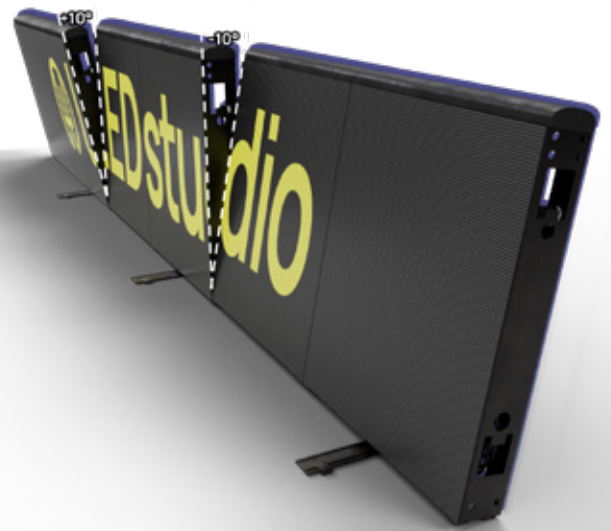


## PROTECTIVE PIXEL LOUVRES

Our pixel louvres provide maximum protection for pixels, players, and audience from accidental collisions with players, spectators, or balls.

# PLAYER KICK BACK & IMPACT PROTECTION

Each section of the STADIA Perimeter is designed to tilt upon impact, helping to absorb shock and protect players and spectators during collisions.



# EMERGENCY EXIT

The STADIA Perimeter features gated sections for easy exit access by stewards and fans. The display can also be customized with rotating or kick-down sections to meet specific requirements.



# INTERNAL CABLE MANAGEMENT

All cables are connected internally reducing the risk of trip hazards or accidental disconnection.



Looking for BIG screens? Check out our FORTIS 4 below...



 Gloucester Rugby

Contact us: +44 (0)20 3832 9500  
[www.theledstudio.com](http://www.theledstudio.com)

Version 1.0

 LEDstudio



# STADIA Ribbon Mid-Tier

CAPTIVATE & ENGAGE



Arthur Ashe Stadium



UEFA Capable\*



Customise Your Display Height



Front, Rear & Top-Down Servicing



170° Hrz/Vrt Viewing Angles



Up to 6000 Nits



6000:1 Contrast



Multiple Pixel Pitches - 6.25, 8.33, 10.4



Lightweight - Up to 40% lighter vs. legacy stadium ribbons



Power & Data Redundancy



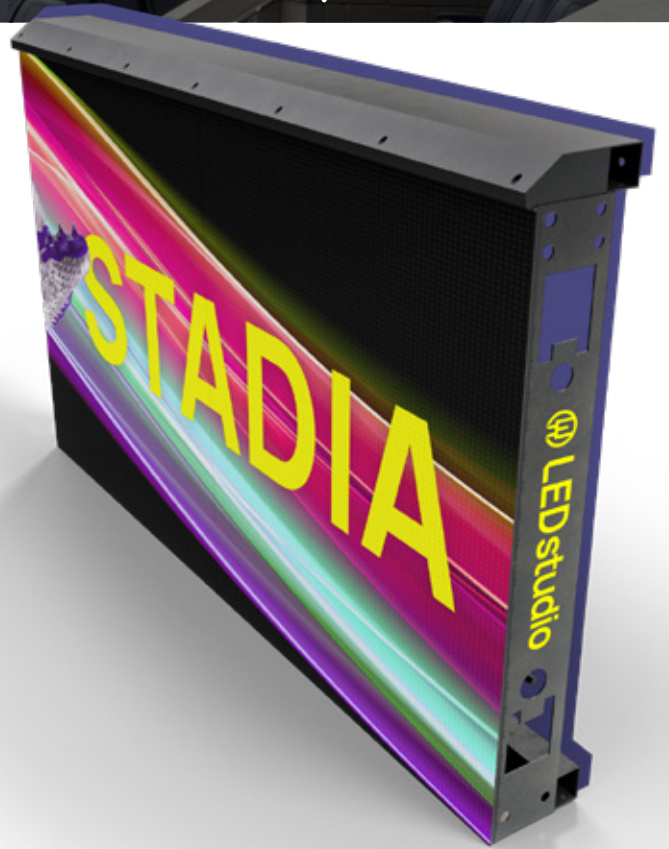
Single Cable Power & Data



Indoor & Outdoor Use



High Refresh Rates



## REDUCED WEIGHT

The STADIA Ribbon Mid Tier is designed to minimise installation weight, simplifying integration into stadium architecture and reducing the need for complex steelwork.

Contact us: +44 (0)20 3832 9500

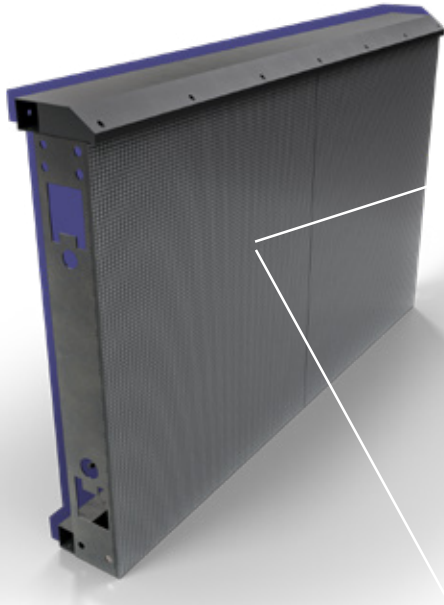
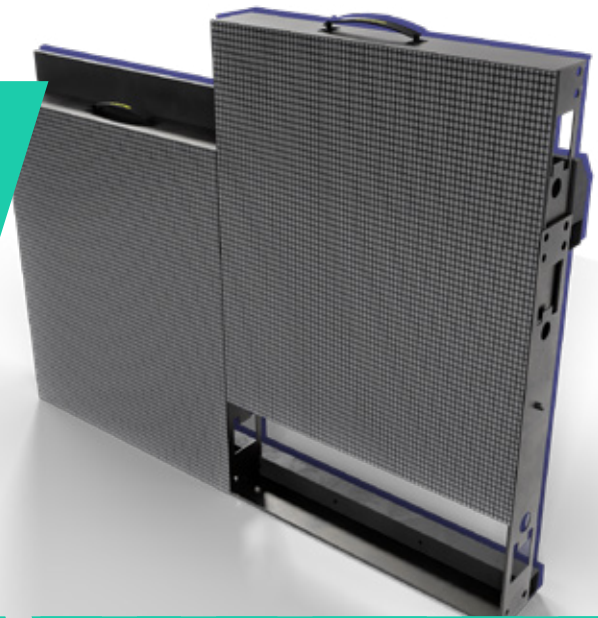
[www.theledstudio.com](http://www.theledstudio.com)

Version 1.0

LEDstudio

## TOP-DOWN SERVICING

The Mid-Tier RIBBON allows easy access to display modules from balconies, eliminating the need for scaffolding and streamlining maintenance.



## PROTECTIVE PIXEL LOUVRES

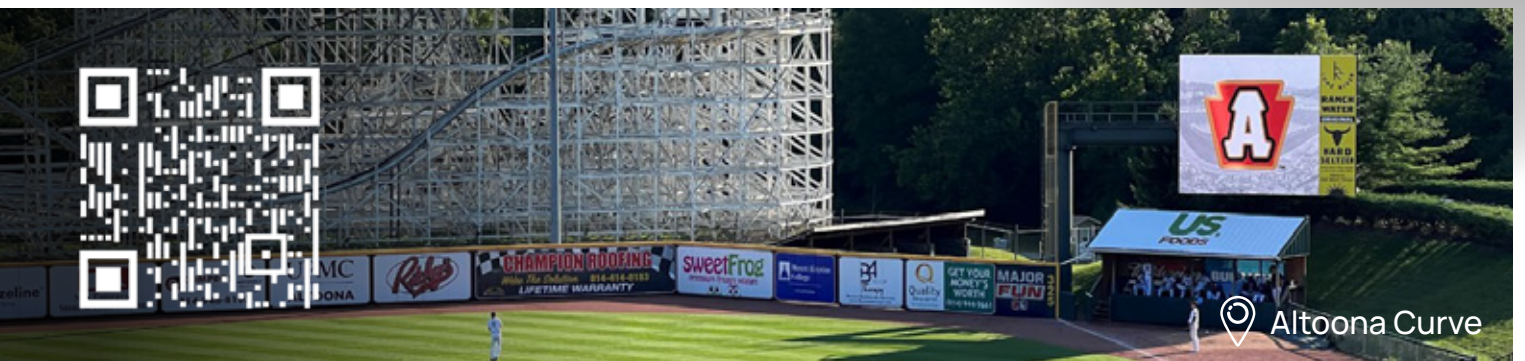
Flexible pixel louvres protect LEDs from impacts and enhance display contrast by shading pixels from direct sunlight, improving durability and visibility.

## INTERNAL CABLE MANAGEMENT

Internal routing of power and signal cables reduces trip hazards and prevents disconnections, ensuring a safer, more secure, and streamlined setup.



Looking for BIG screens? Check out our FORTIS 4 below...



Contact us: +44 (0)20 3832 9500  
[www.theledstudio.com](http://www.theledstudio.com)

Version 1.0

 LEDstudio



## SPECIFICATIONS - PERIMETER (Display height customisable to project requirements)

Core Specifications			
Remark	Rubber Mask		Ready
Model	6	8	10
Pixel Pitch (mm)	6.67	8.33	10
Pixel Configuration	3 in 1 SMD		
Module Size (mm) (H+W)	300 x 400		
Module Resolution (pixels) (H+W)	N/A		
Cabinet Size (mm) (H+W)	900 x 1600		
Cabinet Resolution (pixels) (H+W)	135 x 240	108 x 192	90 x 160
Weight (kg/m <sup>2</sup> )	56		
Cabinet Weight (kg/lbs)	N/A		
Brightness (cd/sqm)	6000		
Contrast Ratio	6000:1		
Technical Specifications			
Viewing Angle	160/120		
IP Rating	IP65		
<b>For full specifications, contact us at: <a href="mailto:sales@theledstudio.com">sales@theledstudio.com</a>   +44 (0) 20 3832 9500</b>			

\*All data contained is subject to change based on project requirements.

\*UEFA Specs applied on a project by project basis.

Contact us: +44 (0)20 3832 9500

[www.theledstudio.com](http://www.theledstudio.com)

Version 1.0

 **LEDstudio**

## SPECIFICATIONS - RIBBON MID-TIER (Display height customisable to project requirements)

Core Specifications			
Model	MT-6	MT-8	MT-10
Pixel Pitch (mm)	6.25	8.33	10.4
Pixel Configuration	3 in 1 SMD		
Module Size (mm) (H+W)	Customised Height x 125mm Width		
Module Resolution (pixels) (H+W)	N/A		
Cabinet Size (mm) (H+W)	500/750/1000 x 500		
Cabinet Resolution (pixels) (H+W)	80/120/160 x 80	60/90/120 x 60	48/72/96 x 48
Weight (kg/m <sup>2</sup> )	25		
Cabinet Weight (kg/lbs)	N/A		
Maintenance	Front, Rear & Top-Down		
Brightness (cd/sqm)	6000		
Contrast Ratio	6000:1		8500:1
Technical Specifications			
Brightness Control	0-100% Manual / Auto (Sensor Dependent)		
Gray Scale (bit)	16		
Viewing Angle	160/120		
IP Rating	IP65		
<b>For full specifications, contact us at: <a href="mailto:sales@theledstudio.com">sales@theledstudio.com</a>   +44 (0) 20 3832 9500</b>			

\*All data contained is subject to change based on project requirements.  
 \*UEFA Specs applied on a project by project basis.

## OUR SERVICES



CONSULTANCY



DESIGN & ENGINEERING



MANUFACTURING



INSTALLATION & SLA SERVICES



CONTENT CREATION

### UK Showroom

The Pavilion  
 Merchant Square  
 London, W2 1JZ  
 United Kingdom

Tel: +44 (0) 20 3832 9500

### Head Office

Cromwell Place  
 Lime Tree Way  
 Basingstoke, RG24 8YJ  
 United Kingdom

Tel: +44 (0) 20 3852 9500

### EMEA Office

169-171 Makarios III Avenue  
 Cedars Oasis Tower  
 3027, Limassol  
 Cyprus

Tel: +357 9625 8848

### USA Office

22 Boston Wharf Road,  
 7th Floor,  
 Boston, MA 02210  
 United States

Tel: +1 (833) 533-7836

### USA Showroom

123 Heiman Street, Suite 200,  
 San Antonio,  
 Texas 78205  
 United States

Tel: +1 (833) 533-7836