



**ALL-IN-ONE FINE PITCH (SMD/COB/MIP)**

## Installation Free.

Designed for convenience and ease of use, this product is pre-configured and ready for immediate use straight from the box. Effortlessly turn it on, swiftly connect your device, and instantly embark on your digital journey.

## Fully Mobile.

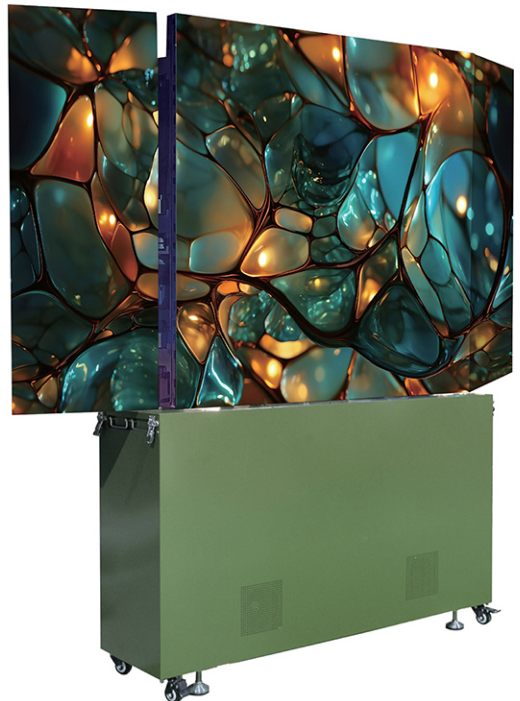
Featuring a sleek, compact design and equipped with smooth-gliding casters, the PROTEUS is specifically crafted to navigate through standard doors and fit comfortably into elevators, offering seamless mobility and hassle-free placement wherever you require.

## Adjustable Height.

With the included remote control, effortlessly adjust the screen height to match any setting, guaranteeing a clear, uninterrupted viewing experience suitable for any environment.

## Customizable.

Should 1080p or 4K UHD not meet your specific needs, we are equipped to create a custom display tailored precisely to your unique requirements.



16 bit 

up to **1000nits**   
peak brightness for your HDR photos and videos

**3840-7680Hz**  
high refresh rate

**2000-12000K**   
color temp

**2K-4K**   
resolution



**COB**  
Energy Efficient



**Installation**  
Free



**Fully Mobile**



**Adjustable**  
Height



**Customizable**



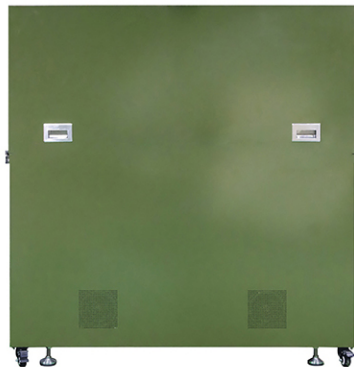
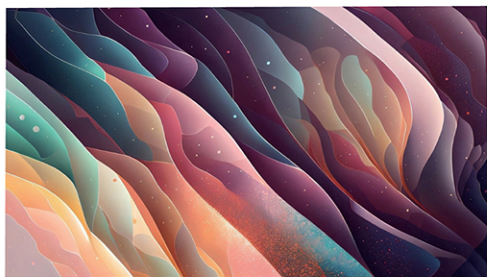
**1080p & 4K UHD**



### Versatility for an ever-changing landscape

The PROTEUS, an all-in-one LED display featuring automatic opening and closing, is engineered for a highly flexible and demanding market. It's ideally suited for a variety of applications including pop-up command centers, rental, hybrid meeting rooms, education, home theaters, events, road shows, and any other settings requiring a versatile, portable, and easy-to-install display solution.

## Product Overview



# SPECIFICATION

## TRANSFORMER

PHYSICAL PARAMETERS	T110-2K	T130A-2K	T130B-4K	T136A-2K	T136B-4K
Pixel Pitch (mm)	P1.25	P1.5	P0.75	P1.56	P0.78
Pixel Configuration	COB (SMD / MIP Optional)	COB (SMD / MIP Optional)	COB (SMD / MIP Optional)	COB (SMD / MIP Optional)	COB (SMD / MIP Optional)
Display Size (mm) (W*H)	2400*1350	2880*1620	2880*1620	3000*1687.5	3000*1687.5
Overall Size (mm) (W*H*D)	1650*1760*520	2170*2084*520	2170*2084*520	2050*2150*520	2050*2150*520
Overall Weight (kg)	470	520	520	550	550
OPTICAL PARAMETERS					
Resolution (W*H)	1920*1080	1920*1080	3840*2160	1920*1080	3840*2160
Frame Rate (Hz)	50/60	50/60	50/60	50/60	50/60
Refresh Rate (Hz)	3840~7680	3840~7680	3840~7680	3840~7680	3840~7680
Brightness (nits)	1000	1000	1000	1000	1000
Gray Scale (bit)	14~16	14~16	14~16	14~16	14~16
Color Temp (K)	2000~12000	2000~12000	2000~12000	2000~12000	2000~12000
ELECTRICAL PARAMETERS					
Max. Power Consumption (W)	≤1460	≤2100	≤2800	≤2280	≤3030
Avg. Power Consumption (W)	≤600	≤840	≤1120	≤900	≤1200
Working Voltage (V)	AC: 110V~240V, 50~60Hz	AC: 110V~240V, 50~60Hz	AC: 110V~240V, 50~60Hz	AC: 110V~240V, 50~60Hz	AC: 110V~240V, 50~60Hz
ADDITIONAL FEATURES					
Lifetime (H)	100,000	100,000	100,000	100,000	100,000
Operation Temp (°C)	-10~+40	-10~+40	-10~+40	-10~+40	-10~+40
Storage Temp (°C)	-25~+60	-25~+60	-25~+60	-25~+60	-25~+60
Operation Humidity (RH)	10%~80%, no condensation	10%~80%, no condensation	10%~80%, no condensation	10%~80%, no condensation	10%~80%, no condensation
Control Panel Type	Remote control / Touch panel	Remote control / Touch panel	Remote control / Touch panel	Remote control / Touch panel	Remote control / Touch panel
Interface	HDMI*2, 3.5*1, USB3.0*2, USB2.0*1, RJ45*1	HDMI*2, 3.5*1, USB3.0*2, USB2.0*1, RJ45*1	HDMI*2, 3.5*1, USB3.0*2, USB2.0*1, RJ45*1	HDMI*2, 3.5*1, USB3.0*2, USB2.0*1, RJ45*1	HDMI*2, 3.5*1, USB3.0*2, USB2.0*1, RJ45*1
WiFi Mode	Wifi-5G band*1, Wifi-2.4G band*1, Wifi-AP*1	Wifi-5G band*1, Wifi-2.4G band*1, Wifi-AP*1	Wifi-5G band*1, Wifi-2.4G band*1, Wifi-AP*1	Wifi-5G band*1, Wifi-2.4G band*1, Wifi-AP*1	Wifi-5G band*1, Wifi-2.4G band*1, Wifi-AP*1



\*All specifications are subject to change according to the specific situation of the project (the product shall be subjected to the submitted contract specification)

# VCD

POWERED BY

 **LEDstudio**

Please contact us if you have any questions,  
we're always happy to help

[www.vod-visual.co.uk](http://www.vod-visual.co.uk)  
[info@vod-visual.co.uk](mailto:info@vod-visual.co.uk)

**UK Showroom**

The Pavilion  
Merchant Square  
London, W2 1JZ  
United Kingdom

Tel: +44 (0) 20 3832 9500

**Head Office**

Unit 3 Clearwater Business Park  
Frankland Road  
Swindon, SN5 8YZ  
United Kingdom

Tel: +44 (0) 20 3852 9500

**EMEA Office**

169-171 Makarios III Avenue  
Cedars Oasis Tower  
3027, Limassol  
Cyprus

Tel: +357 9625 8848

**USA Office**

22 Boston Wharf Road,  
7th Floor,  
Boston, MA 02210  
United States

Tel: +1 (833) 533-7836

**USA Showroom**

123 Heiman Street, Suite 200,  
San Antonio,  
Texas 78205  
United States

Tel: +1 (833) 533-7836