

 **FORTIS** Plus



CUTTING EDGE BILLBOARD TECHNOLOGY

THINNER, LIGHTER, ENERGY EFFICIENT

Award winning design and features.

Reduce install and material costs

At only 120mm deep, and up to 40% lighter than legacy DOOH display technologies.

Optional FOCAL lens technology

Reducing light pollution and increased NIT output.

Intelligent power supply monitoring

Allows the screen to run more efficiently saving up to 60% on running costs.

ScreenMetrics

State of the art monitoring and redundancy

Simplicity – single cable connections


Reduced components and complexity with single cable power and data cabling.

Custom cabinet arrays

Depending on module size and array we build cabinets and pre-assemble them for faster and easier installation.






 **Focal Technology**

 **10,000+ Nits**

 **Energy Saving**


 **UV Resistance**

 **High Refresh Rate**


 **Secondary Power Supply**

 **Light & Thin**

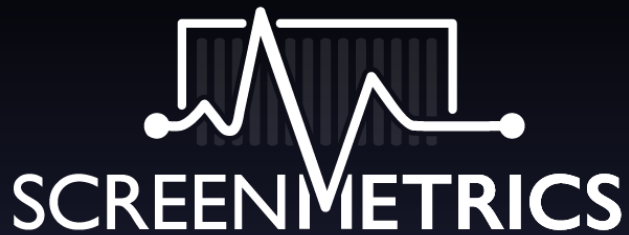
 **Block Installation**

 **Front & Rear Service**

 **High Protection**

 **Dual Backup**

 **System Integration**



WHAT IS SCREENMETRICS?

Service Monitoring is essential when your systems represent the public face of your business, SCREENMETRICS offers a comprehensive remote monitoring package to provide peace of mind and ensure your business is always ready to perform. SCREENMETRICS has been designed to ensure that your systems are running at optimum levels. This monitoring can be used for many purposes – to reduce or even eliminate unexpected downtime or to alert technicians to impending maintenance needs in technology applications.

SCREENMETRICS provides 24/7 screen monitoring via a proactive, secure system. Remote fault alerts and early identification analytics support and simplify screen lifecycle planning and management.

Dual Core Redundancy

Core 1: Contains Synchronous/Asynchronous screen processor, 4g router and monitoring PC

Core 2: Contains CMS/PC and 4G router (customer zone)

Core 1 receives a live input from Core 2 and will take over content playback if there is an issue. If all signal is lost the display will take a freeze frame of the last displayed image until issue is resolved resulting in no downtime.

24/7 system monitoring

Improved uptime efficiency

Live camera views

Single dashboard for multiple networks

Safe & secure system

Real-time fault diagnosis

Easy report generation

Data recorded to secure Navaho Cloud



INSTALLATION APP

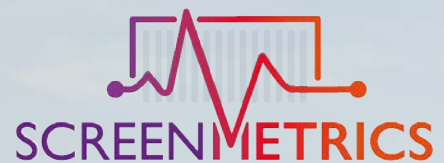
SCREENMETRICS installation app performs a full diagnostic on the screen at time of install, ensuring correct connections and simplifying commissioning.

Contact us: +44 (0)20 3832 9500

www.theledstudio.com

Version 1.1

 **LEDstudio**



**Say goodbye to patchy screens.
ScreenMetrics will alert you before a
problem becomes a big problem**

SIMPLIFIED INSTALLS

Custom designs for every install eventuality.

Pre-assembled cabinet arrays can be delivered to site, simplifying and speeding up your installations.

Contact us: +44 (0)20 3832 9500

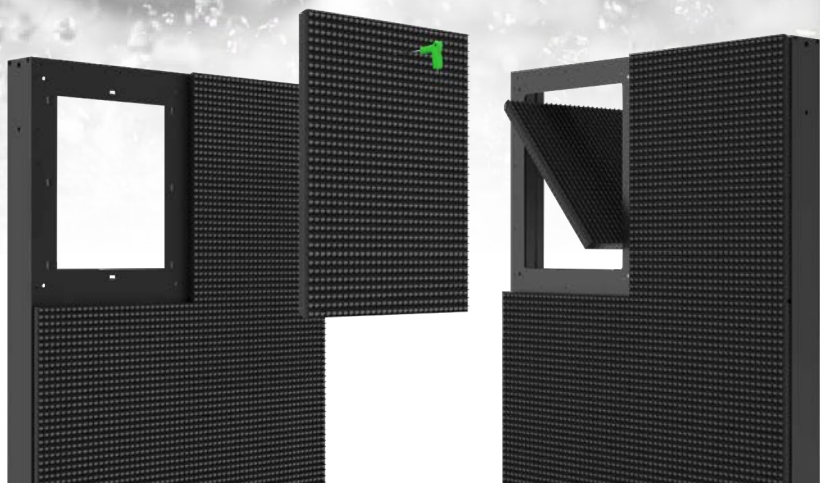
www.theledstudio.com

Version 1.1

 LEDstudio

IP66 WEATHERPROOF STRUCTURE

IP66 for the entire cabinet making it highly durable in any demanding outdoor environment.



Efficient install and serviceability

Gain quick and easy access to key components with front or rear access.

Contact us: +44 (0)20 3832 9500

www.theledstudio.com

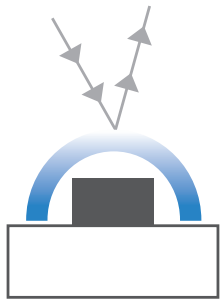
Version 1.1

 LEDstudio

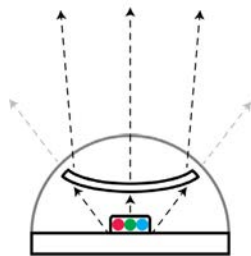
FOCAL LENS TECHNOLOGY

Light pollution and energy consumption reduction

Introducing FOCAL, an optional upgrade for our FORTIS Plus outdoor display. This groundbreaking feature allows for a more precise and focused beam of light, ensuring that your advertisement reaches your target audience without disturbing nearby residents and buildings. Our FOCAL technology minimises light pollution outside the displays frustum, making it possible to install digital billboards in sensitive locations where planning permissions may have previously been denied.



Standard lens diagram



Focal lens diagram

Leading the way – why our innovations exceed the competition

Our advanced Focal solution is a superior alternative to traditional louvers for reducing the spread of emitted light. Our lenses efficiently adjust the horizontal and vertical viewing angles to create a specific lighting pattern, saving energy and reducing light pollution and increasing emitted light in the direction of the audience.

Made with high-quality anti-UV polycarbonate, our lenses are resistant to dust and snow, and will not yellow or crack under prolonged exposure to sunlight and environmental conditions.

Our high-performance optical lens design allows for a superior luminance ratio and ultra-low power consumption *see spec table for power info.

Choose between 8,000, 10,000 and 12,000 nits.

Market leading contrast ratios of up to 15000:1 ensuring your content is crisp, rich and impactful even in bright sunlight.



SPECIFICATIONS

SMD SERIES

| MODEL | FP 3.91 | FP 5.95 | FP 6.35 | FP 10.16 | FP 8.33 | FP 10 |
|---------------------------------------|--------------|--------------|--------------|--------------|--------------|--------------|
| Pixel Pitch (mm) | 3.91 | 5.95 | 6.35 | 10.16 | 8.33 | 10 |
| Pixel Configuration | SMD | SMD | SMD | SMD | SMD | SMD |
| Size of Module (mm) (H × W) | 500 × 500 | 500 × 500 | 609.6 × 508 | 609.6 × 508 | 500 × 600 | 500 × 600 |
| Resolution of Module (Pixels) (H × W) | 128 × 128 | 84 × 84 | 96 × 80 | 60 × 50 | 60 × 72 | 50 × 60 |
| Weight (kg/m²) | 28 | 28 | 24 | 24 | 24 | 24 |
| Viewing Angle | 160° / 120° | 160° / 120° | 160° / 120° | 160° / 120° | 160° / 120° | 160° / 120° |
| Brightness (cd/m²) | >5000 | >5000 | >6000 | >6000 | >6000 | >6000 |
| Power Consumption Max / Avg (W/m²) | 570 / 190 | 570 / 190 | 540 / 180 | 540 / 180 | 540 / 180 | 540 / 180 |
| IP Rating | IP67 | IP67 | IP67 | IP67 | IP67 | IP67 |
| Grey Level | 16 Bit | 16 Bit | 16 Bit | 16 Bit | 16 Bit | 16 Bit |
| Refresh Frequency (Hz) | 3840 | 3840 | 3840 | 3840 | 3840 | 3840 |
| Maintenance | Front & Rear | Front & Rear | Front & Rear | Front & Rear | Front & Rear | Front & Rear |

FOCAL

| MODEL | FP 10 | FP 16.93 | FP 16.93 – B50 |
|------------------------------------------------|--------------|--------------|----------------|
| Pixel Pitch (mm) | 10 | 16.93 | 16.93 |
| Pixel Configuration | SMD + LOB | SMD + LOB | SMD + LOB |
| Size of Module (mm) (H × W) | 300 × 500 | 609.6 × 508 | 609.6 × 508 |
| Resolution of Module (Pixels) (H × W) | 30 × 50 | 36 × 30 | 36 × 30 |
| Weight (kg/m²) | 29.5 | 29 | 29 |
| Viewing Angle | 100° / 50° | 100° / 50° | 50° / 50° |
| Brightness (cd/m²) | >8000 | >10000 | >12000 |
| Power Consumption @ 6000 nits Max / Avg (W/m²) | 360 / 120 | 200 / 65 | 100 / 35 |
| IP Rating | IP67 | IP67 | IP67 |
| Grey Level | 16 Bit | 16 Bit | 16 Bit |
| Refresh Frequency (Hz) | 3840 | 3840 | 3840 |
| Maintenance | Front & Rear | Front & Rear | Front & Rear |

*All data contained is subject to change.



Please contact us if you have any questions,
we're always happy to help

www.theledstudio.com
sales@theledstudio.co.uk

UK Showroom

The Pavilion
Merchant Square
London, W2 1JZ
United Kingdom

Tel: +44 (0) 20 3832 9500

Head Office

Unit 3 Clearwater Business Park
Frankland Road
Swindon, SN5 8YZ
United Kingdom

Tel: +44 (0) 20 3852 9500

EMEA Office

169-171 Makarios III Avenue
Cedars Oasis Tower
3027, Limassol
Cyprus

Tel: +357 9625 8848

USA Office

8701 John W Carpenter Frwy,
Suite 150,
Dallas TX 75247
USA

Tel: +1 (508) 657-4622