



STANDARD | LOW-SCAN | HIGH BRIGHT

Dual-Sided Display & 1:1 Ratio

The GEMINI Series features high-definition, small pitch LED panels with a sleek, bezel-free 500 x 500mm cabinet size.

Designed for indoor spaces like large scale retail displays, exhibitions and supermarket wayfinding, it offers seamless performance for any application.



Ultra-Smooth Synchronous Display

With fast response time and minimal latency, GEMINI ensures seamless visuals without any borders.

The ultra-smooth, synchronous display guarantees high-quality content playback, making it perfect for live broadcasts, sports events and artistic performances.



Dual-Sided with Independent Brightness

Each display side adjusts brightness for indoor or outdoor use, ensuring clear, high-visibility viewing anytime.





Dual-Sided Display

Supports simultaneous display on both sides, with the option to mirror or show different content, adapting to diverse needs.



Energy Efficient

The advanced energy-saving design delivers low power consumption while maintaining high brightness, HDR visuals, and 16-bit greyscale support.



Ultra-Slim Profile

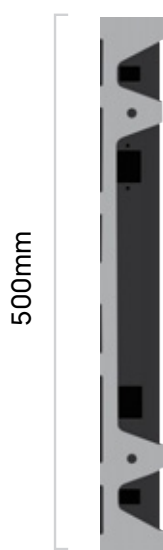
At just 58mm thick, it offers sleek design, simple installation, and a modern aesthetic.



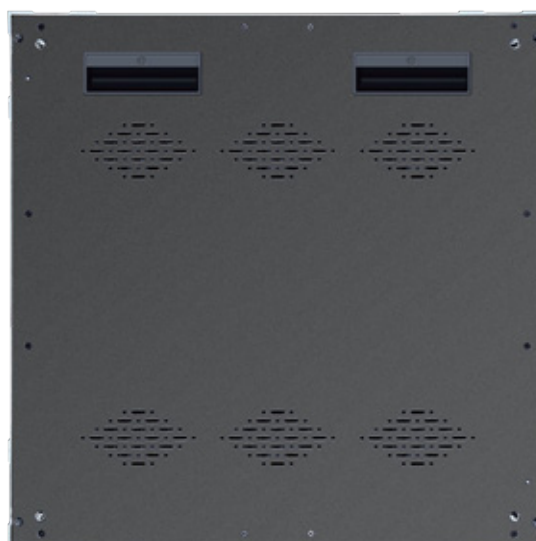
Front Maintenance

The all-in-one front-access design allows for easy maintenance, with convenient power and data connections for quick and efficient setup.

Cabinet Dimensions



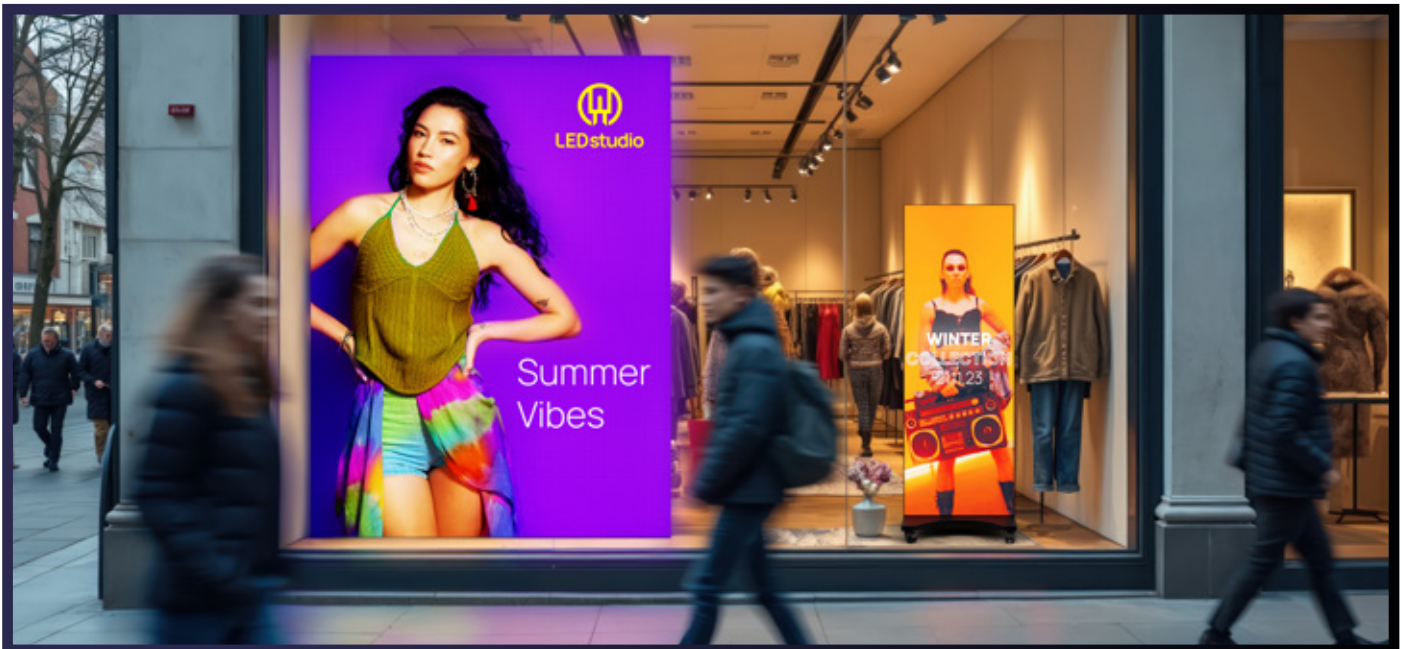
58mm



500mm

USE CASES

EXHIBITIONS



SHOP WINDOWS

Specifications

Category	G19	G19 Low Scan	G26	G26 Low Scan	G39
Pixel Pitch(mm)	1.95		2.6		3.91
Module Size (mm)	250x250				
Module Resolution(W×H)	128x128		96x96		64x64
Unit Composition(W×H)	2x2				
Cabinet Size(mm)	500x500x58				
Cabinet Resolution (W×H)	256x256		192x192		128x128
Pixel Density(Dots/m²)	262144		147456		65536
Cabinet Weight(kg / lbs)	7.1/15.6				
Cabinet Flatness(mm)	≤0.15				
Brightness(nits)	0-800 (adjustable)	0-1200 (adjustable)	0-1000 (adjustable)	0-1200 (adjustable)	
Color Temperature (K)	2000~12000 (adjustable)				
Viewing Angle(H/V)	160°/160°				
Contrast Ratio	6000:1				
Peak Power Consumption(w/m²/w/m²)	600/56	800/74	550/51	660/61	
Average Power Consumption(w/m²/w/m²)	240/22	320/30	220/20	260/24	
Power Supply Requirements	AC100~240V (50~60Hz)				
Frame Rate(Hz)	50/60				
Image Refresh Rate(Hz)	3840				
Gray Level(Bit)	14~16				
Operating Temperature(°C/°F)	-10 ~ +45 / +14 ~ +113				
Operating Humidity (%RH)	10~80 anti-fog				
Maintenance Method	Front maintenance				
Protection Level	IP41				

*Scan Rate and Refresh Rate subject to project specifications.

*Average power consumption is subject to display brightness and pixel configuration.

*All data contained is subject to change based on project requirements.



Please contact us if you have any questions,
we're always happy to help

www.theledstudio.com
sales@theledstudio.co.uk

HQ & Showroom

Cromwell Place
Lime Tree Way
Basingstoke, RG24 8YJ
United Kingdom

Tel: +44 (0) 20 3852 9500

London Showroom

The Pavilion
Merchant Square
London, W2 1JZ
United Kingdom

Tel: +44 (0) 20 3832 9500

DACH Office

Zeppelinstr. 10
79331 Teningen
Germany

Tel: +49 7663 942 7329

US Office

22 Boston Wharf Road,
7th Floor,
Boston, MA 02210
United States

Tel: +1 (833) 533-7836

US Showroom

123 Heiman Street, Suite 200,
San Antonio,
Texas 78205
United States

Tel: +1 (833) 533-7836

UAE Office & Showroom

Integrate X, Warehouse No 4
Al Qusais, Ind Area No. 5
Dubai, UAE
P.O. Box 487146

Tel: +357 9625 8848