



V-POSTER



MOBILE. VERSATILE. STYLISH



ENERGY
EFFICIENT



LIGHT
WEIGHT



DURABLE



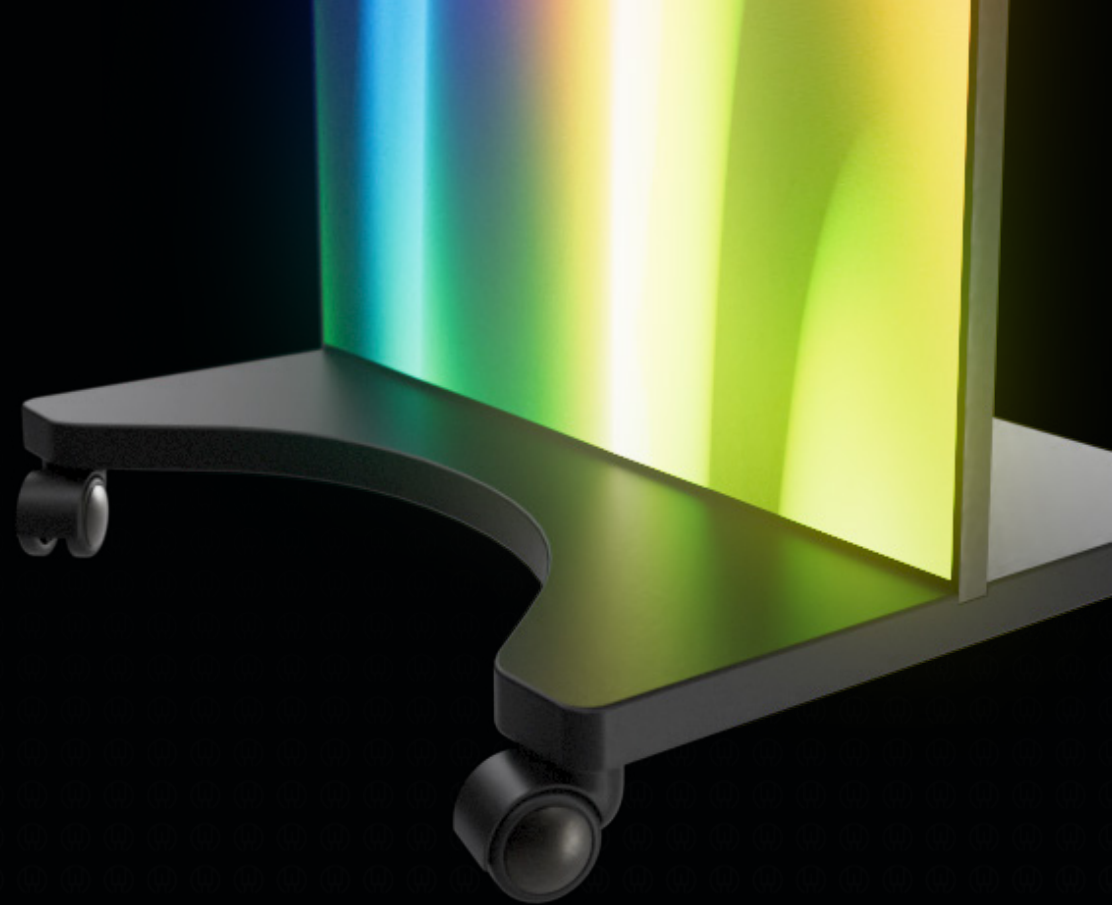
SCALABLE



PIXEL PITCH
P1.25(COB),
P1.8 & P2.5(SMD)

MAXIMISE ROI WITH MOBILE TECHNOLOGY

Don't tie down your investment with fixed location assets. The V-Poster is the perfect digital signage solution for ever changing spaces with sustainability in mind.



THREE MOUNTING METHODS

- Mobile
- Wall
- Hanging



INTEGRATED SPEAKERS

Integrated speakers make the V-Poster perfect for wayfinding or information points at museums, showrooms or points of sale.



CLOUD & APP MANAGEMENT

With a cloud based CMS the V-Poster is a true all-in-one solution, allowing for seamless playback and fast content rollouts across multiple locations. 3rd party CMS systems also supported.



PLUG & PLAY

The V-Poster is preconfigured and ready to work right out of the box. Easily roll out multiple displays and have them up and running in minutes!

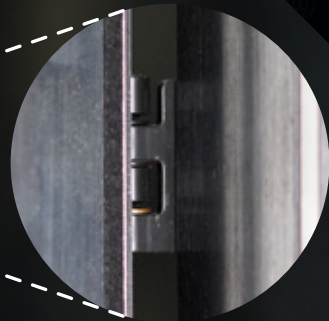
GET CREATIVE

SCALE YOUR DISPLAYS
USING THE V-POSTERS
CASCADE MODE



BEZEL FREE

Hinged bezel allows
for seamless
configurations.



*V-Posters must have the same pixel pitch
in order to utilise cascade mode.



EDGE-TO-EDGE

THREE

MOUNTING METHODS



MOBILE



WALL



HANGING

MULTIDEVICE COMPATIBLE



HDMI



RJ45



USB



WIFI



AUDIO

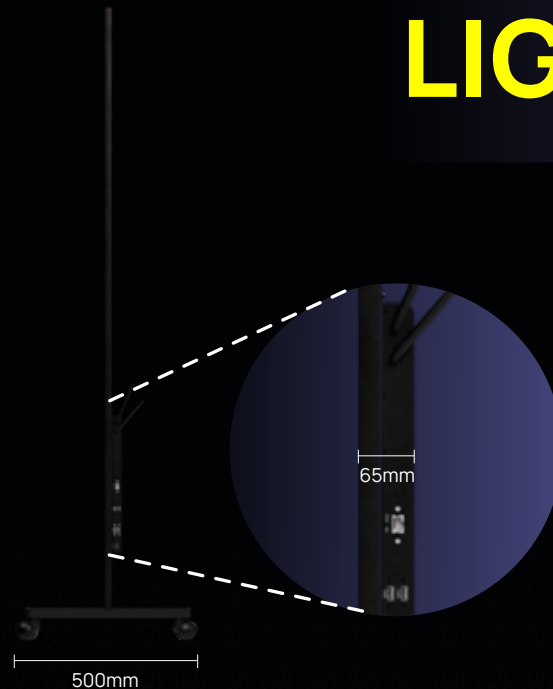
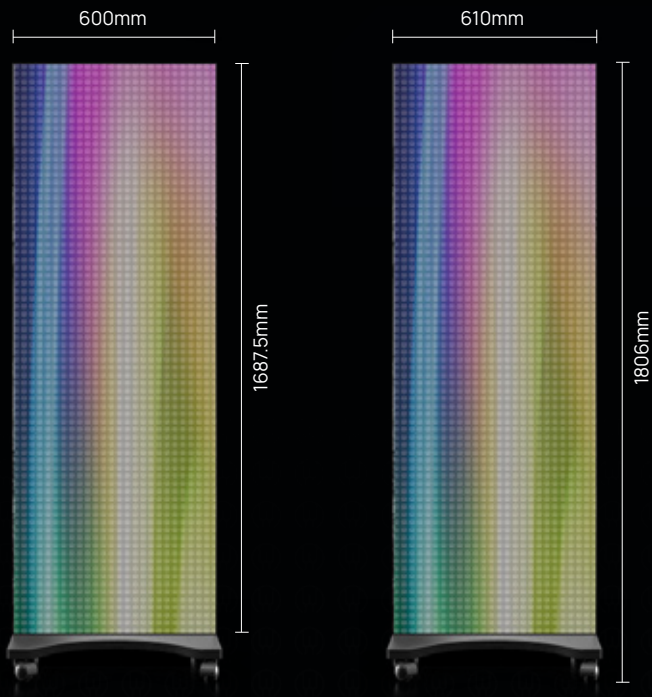


LIGHT &
TEMPERATURE
SENSOR

BUILT TO LAST

GOB This innovative technology seals the LED's with transparent epoxy glue. This protects the LED from any harmful accidents by making it anti-collision, waterproof, anti-UV and dust proof. The lifespan of the LED is also extended due to improved heat dissipation.

A MUST IN HEAVY FOOTFALL AREAS!



LIGHT & COMPACT

Weighing in at only 35kg the V-Poster couldn't be easier to handle or relocate.

*Note: Weight with mobile base = 42kg.



USER INTERACTION: TOUCH COMPATIBLE

With an infrared frame, the V-Poster is touch capable with up to 16 touch points.

*Touch function is an additional option



FAST & EASY SERVICING

The V-Poster can be easily maintained and managed from the front for quick and easy servicing. Module swaps take merely seconds.

Specifications	P-1.25	P-1.8	P-2.5
Pixel Pitch (mm)	1.25 (COB)	1.8 (SMD)	2.5 (SMD)
Resolution	480x1350	320x900	240x675
External Dimensions (W+D+H) <small>*with attachable base</small>	610x500x1806mm 23.62x90.68x71.1in		
Screen Dimensions (W+H)	600x1687.5mm 23.62x66.43in		
Weight (kg / lbs)	35 / 77 (Without Base)		
Brightness	50—800cd/m2 Adjustable		
Colour Temperature	2500k—10000k Adjustable		
Viewing Angle (H/V)	140°		
Refresh Rate	≤3840HZ		
Processing	≤16bit		
Voltage (V)	AC90—264VAC,47—63 HZ		
Power Consumption (Max.)	300—450W		
Power Consumption (Avg.)	150—225W		
Maintenance Mode	Front maintenance		
Operation / Storage temperature (°C / °F)	-20 - +50 / -4 - +122		
Relative Humidity	10%-90%		
Communication Mode	WiFi, 4G, LAN		
Display Methods	Synchronous / Asynchronous		

*All data contained is subject to change.



LED display technology
for tomorrow's world.

Please contact us if you have any questions,
we're always happy to help

www.theledstudio.com
sales@theledstudio.co.uk

UK Showroom

The Pavilion
Merchant Square
London, W2 1JZ
United Kingdom

Tel: +44 (0) 20 3832 9500

Head Office

Unit 3 Clearwater Business Park
Frankland Road
Swindon, SN5 8YZ
United Kingdom

Tel: +44 (0) 20 3852 9500

EMEA Office

169-171 Makarios III Avenue
Cedars Oasis Tower
3027, Limassol
Cyprus

Tel: +357 9625 8848

USA Office

22 Boston Wharf Road,
7th Floor,
Boston, MA 02210
United States

Tel: +1 (833) 533-7836

USA Showroom

123 Heiman Street, Suite 200,
San Antonio,
Texas, 78205
United States

Tel: +1 (833) 533-7836