



FORTIS 4 (Sport)

HIGHLIGHTS SCREEN | CURVES | EXTERIOR DIGITAL SIGNAGE



BIG SCREEN STADIUM TECHNOLOGY

Supporting regular sports highlights screen applications, as well as concave and convex curvature, this high-brightness display is ideal for creative uses, from curved screens in sports arenas to impactful roadside billboards and 3D anamorphic designs.



Front & Rear Service



Up to 8000:1 Contrast Ratio



Custom Cabinet/Framework



5,000 - 10,000 Nits



90° Cabinet Arrays



Concave & Convex Curves



Thermodynamic Power Supplies



IP65



Increased Lens UV Resistance

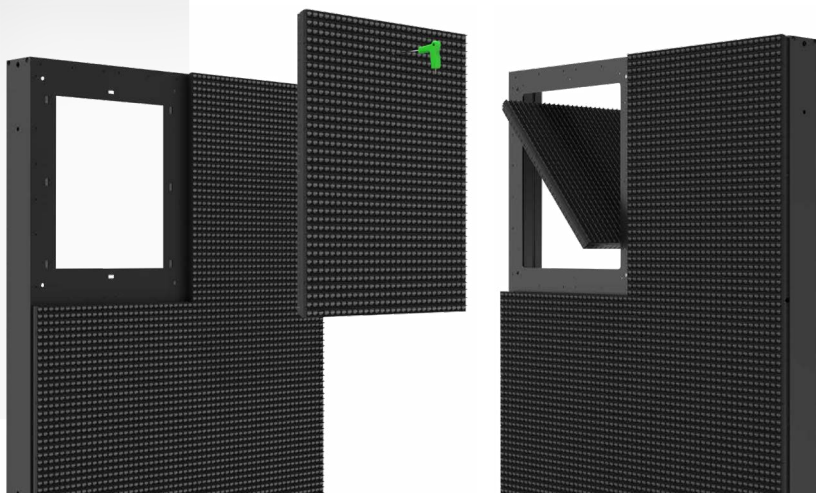


Multiple Pixel Pitches:

3.9, 4.8, 6.9, 10, 10.4, 16.6

Efficient Install & Serviceability

Gain quick and easy access to key components with front or rear access.

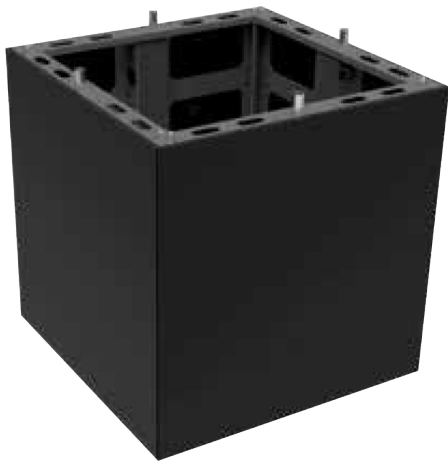


Contact us: +44 (0)20 3832 9500

www.theledstudio.com

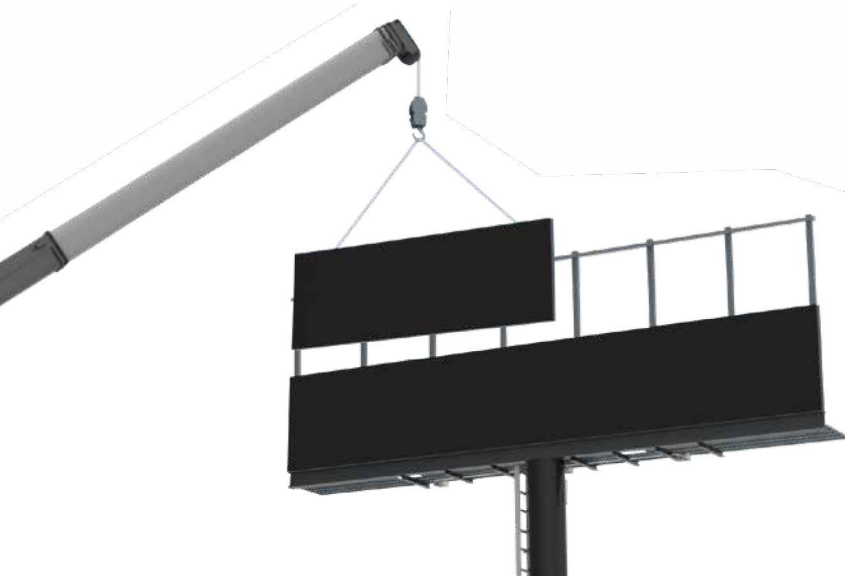
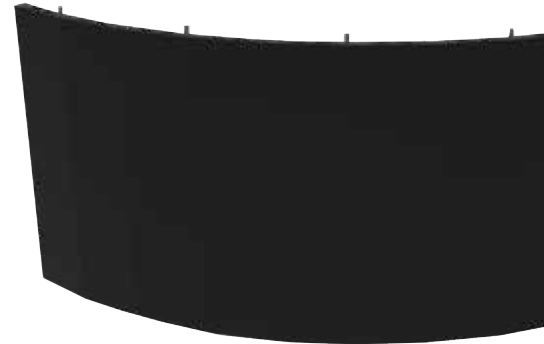
Version 11

 LEDstudio



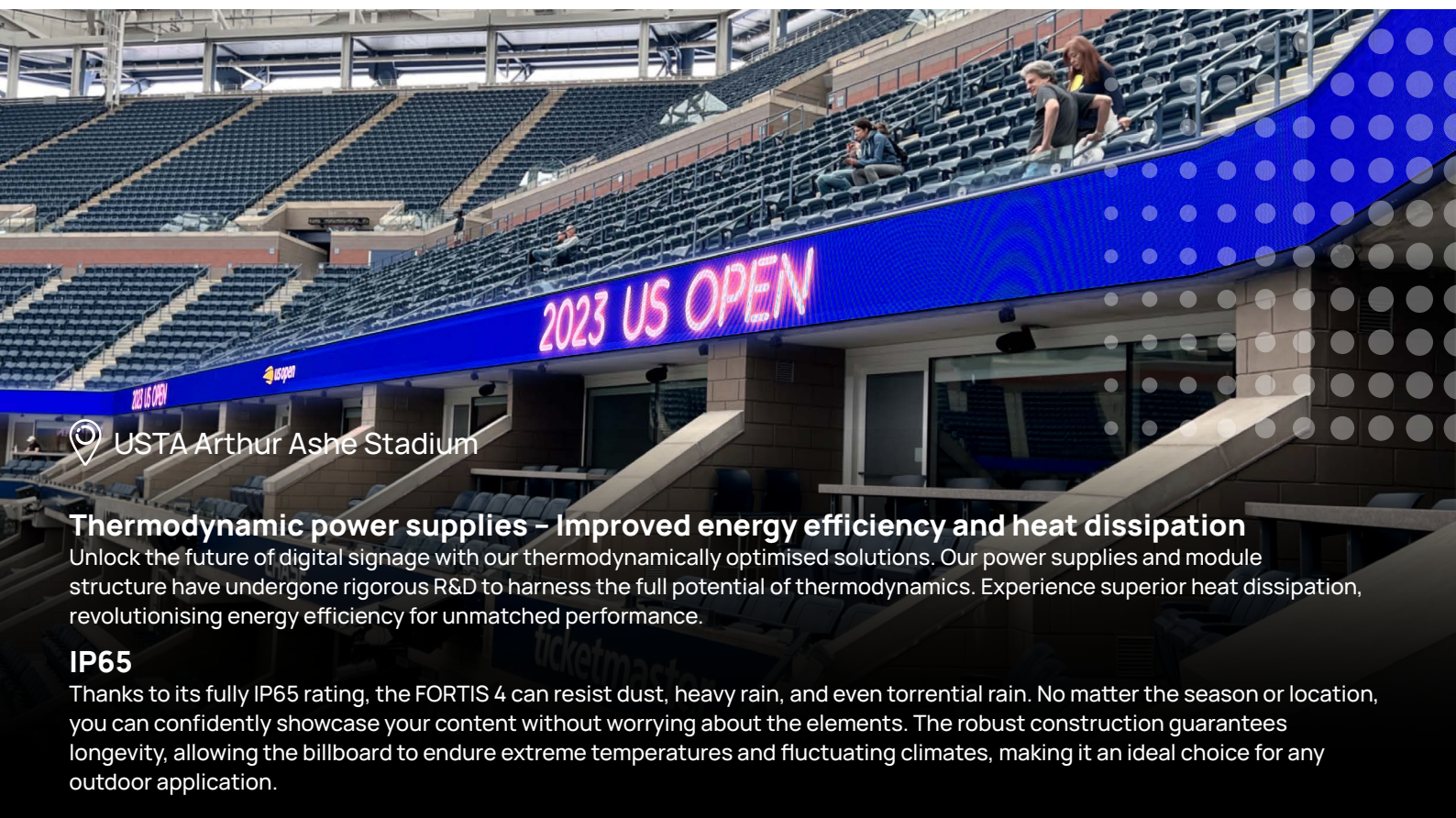
90° & Concave/Convex Curved Support


Elevate your digital signage game with FORTIS 4 – designed for the extraordinary. Our cutting-edge displays accommodate curves and 90-degree corners, unleashing the power of anamorphic 3D-style content. Transform building corners into captivating canvases for breathtaking visuals. Explore FORTIS 4 for jaw-dropping signage solutions that defy expectations.



Custom Cabinet/ Framework

We can craft custom-sized frameworks or locally fabricate them for screen deployment, effectively reducing shipping expenses. Our commitment to excellence means we collaborate closely with local suppliers to deliver top-tier engineering, no matter where you are in the world.



 USTA Arthur Ashe Stadium

Thermodynamic power supplies – Improved energy efficiency and heat dissipation

Unlock the future of digital signage with our thermodynamically optimised solutions. Our power supplies and module structure have undergone rigorous R&D to harness the full potential of thermodynamics. Experience superior heat dissipation, revolutionising energy efficiency for unmatched performance.

IP65

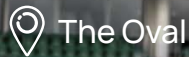
Thanks to its fully IP65 rating, the FORTIS 4 can resist dust, heavy rain, and even torrential rain. No matter the season or location, you can confidently showcase your content without worrying about the elements. The robust construction guarantees longevity, allowing the billboard to endure extreme temperatures and fluctuating climates, making it an ideal choice for any outdoor application.

Up to 8000:1 contrast ratio – Content stands out, even in the brightest of outdoor scenarios.

Contrast is crucial for a display's visual performance because it determines the difference between the brightest whites and the darkest blacks it can produce. High contrast enhances image clarity, detail, and readability, ensuring a more immersive and enjoyable viewing experience. It allows displays to render a broader range of colors and shades, providing better depth and realism in images, videos, and graphics.

Increased lens UV resistance – improves contrast during daytime usage.

Meticulously designed pixel lenses protect LEDs from UV and the elements, ensuring long-lasting brightness, contrast, and vibrancy throughout the screen's lifecycle. Discover superior durability and clarity that stands the test of time.



Looking for Pitch Perimeter or Mid-Tier Ribbon Screens? See below...



SPECIFICATIONS - FORTIS 4 (SPORT) (Display size customisable to project requirements)

FOCAL

Core Specifications						
Pixel Pitch	3.91	4.81	6.94	10.4	16.6	10
Pixel Configuration	SMD	SMD	SMD	SMD	DIP	SMD FOCAL
Module Size (mm) (ft'in") (W×H)	250 x 500 / 0' 9.84" x 1' 7.69"	250 x 500 / 0' 9.84" x 1' 7.69"	250 x 500 / 0' 9.84" x 1' 7.69"	250 x 500 / 0' 9.84" x 1' 7.69"	300 x 600 / 0' 11.81" x 1' 11.62"	300 x 600 / 0' 11.81" x 1' 11.62"
Module Resolution (pixels) (W×H)	64x128	52x104	36x72	24x48	18x36	30x60
Cabinet Size (mm) (ft'in") (W×H×D)	1000 x 500 x 80.7 / 3' 3.37" x 1' 7.69" x 0' 3.18"	1000 x 500 x 80.7 / 3' 3.37" x 1' 7.69" x 0' 3.18"	1000 x 500 x 80.7 / 3' 3.37" x 1' 7.69" x 0' 3.18"	1000 x 500 x 80.7 / 3' 3.37" x 1' 7.69" x 0' 3.18"	1200 x 600 x 80.7 / 3' 3.37" x 1' 7.69" x 0' 3.18"	1200 x 600 x 80.7 / 3' 3.37" x 1' 7.69" x 0' 3.18"
Cabinet Resolution (pixels) (W×H)	N/A	N/A	N/A	N/A	N/A	N/A
Weight (kg/m²) (lbs/ft²)	24 / 4.9	24 / 4.9	24 / 4.9	24 / 4.9	26 / 5.3	27 / 5.5
Cabinet Weight (kg/lbs)	N/A	N/A	N/A	N/A	N/A	N/A
Maintenance	Front & Rear	Front & Rear	Front & Rear	Front & Rear	Front & Rear	Front & Rear
Brightness (nits)	5,000	5,000	8,000	8,000	10,000	10,000
Contrast Ratio	8,000:1	8,000:1	8,000:1	8,000:1	8,000:1	8,000:1
Lifetime Hours	Up to 100,000	Up to 100,000	Up to 100,000	Up to 100,000	Up to 100,000	Up to 100,000
Aspect Ratio	N/A	N/A	N/A	N/A	N/A	N/A
IP Rating	IP65	IP65	IP65	IP65	IP65	IP65
Technical Specifications						
Viewing Angle	160°/120°	160°/120°	160°/120°	160°/120°	110°/45°	100°/50°
Grey Scale (bit)	16	16	16	16	16	16
Refresh Rate* (Hz)	3840	3840	3840	3840	3840	3840
Working Voltage						
Scan Rate*						
Operating Temperature (°C / °F)						
Colour Temperature (K)						
Operating Humidity (RH)						
Maximum Power Consumption (W/m²) (W/ft²)						
Average Power Consumption (W/m²) (W/ft²)						

For full specifications, contact us at: sales@theledstudio.com | +44 (0) 20 3832 9500

*All data contained is subject to change based on project requirements.

*UEFA Specs applied on a project by project basis.

*Scan Rate and Refresh Rate subject to project specifications.

Contact us: +44 (0)20 3832 9500

www.theledstudio.com

Version 11

 LEDstudio



Please contact us if you have any questions,
we're always happy to help

www.theledstudio.com
sales@theledstudio.co.uk

UK Showroom

The Pavilion
Merchant Square
London, W2 1JZ
United Kingdom

Tel: +44 (0) 20 3832 9500

Head Office

Cromwell Place
Lime Tree Way
Basingstoke, RG24 8YJ
United Kingdom

Tel: +44 (0) 20 3852 9500

EMEA Office

169-171 Makarios III Avenue
Cedars Oasis Tower
3027, Limassol
Cyprus

Tel: +357 9625 8848

USA Office

22 Boston Wharf Road,
7th Floor,
Boston, MA 02210
United States

Tel: +1 (833) 533-7836

USA Showroom

123 Heiman Street, Suite 200,
San Antonio,
Texas 78205
United States

Tel: +1 (833) 533-7836