



STADIA Perimeter

ELEVATING MATCH DAY EXPERIENCES

EXCEPTIONAL PITCH-SIDE DIGITAL SIGNAGE



UEFA Capable*



Customise Your Display Height



Up to 6000 Nits



Multiple Pixel Pitches - 6.67, 8.33, 10



Power & Data Redundancy



Front & Rear Service



Single Cable Power & Data



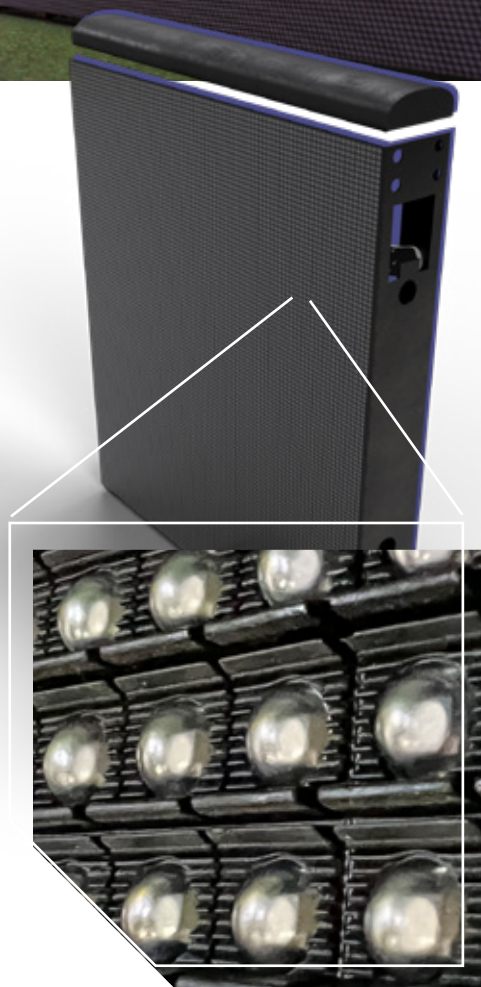
Indoor & Outdoor Use



High Refresh Rates



160/120° Hrz/Vrt Viewing Angles

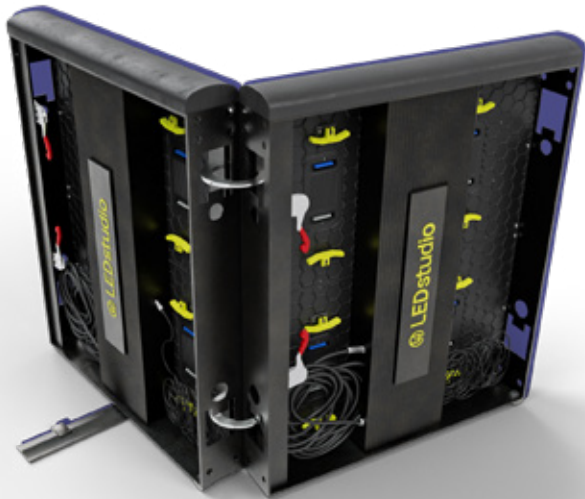
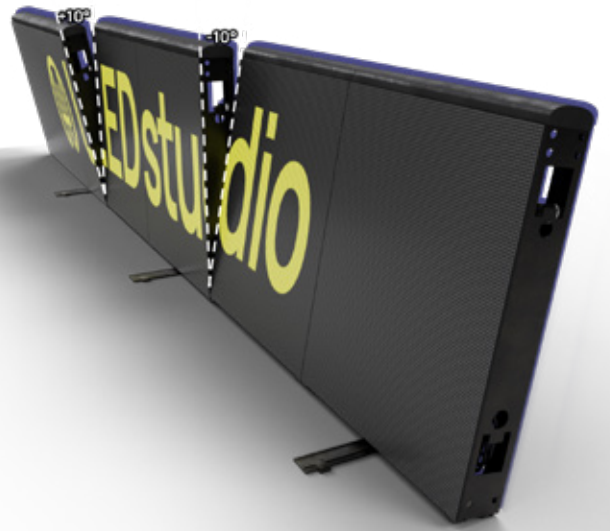


PROTECTIVE PIXEL LOUVRES

Our pixel louvres provide maximum protection for pixels, players, and audience from accidental collisions with players, spectators, or balls.

PLAYER KICK BACK & IMPACT PROTECTION

Each section of the STADIA Perimeter is designed to tilt upon impact, helping to absorb shock and protect players and spectators during collisions.

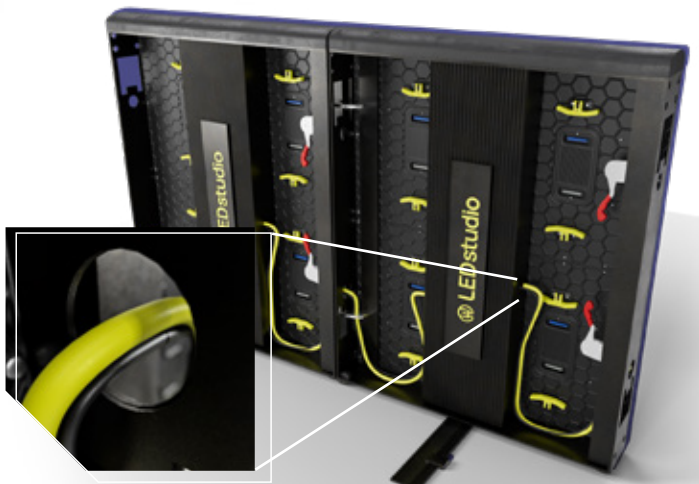


EMERGENCY EXIT

The STADIA Perimeter features gated sections for easy exit access by stewards and fans. The display can also be customized with rotating or kick-down sections to meet specific requirements.

INTERNAL CABLE MANAGEMENT

All cables are connected internally reducing the risk of trip hazards or accidental disconnection.



Looking for BIG screens? Check out our FORTIS 4 (Sport) below...



Gloucester Rugby



STADIA Ribbon Mid-Tier

CAPTIVATE & ENGAGE



USTA Arthur Ashe Stadium



UEFA Capable*



Customise Your Display Height



Front, Rear & Top-Down Servicing



170° Hrz/Vrt Viewing Angles



Up to 6000 Nits



6000-8500:1 Contrast



Multiple Pixel Pitches - 6.25, 8.33, 10.4



Lightweight - Up to 40% lighter vs. legacy stadium ribbons



Power & Data Redundancy



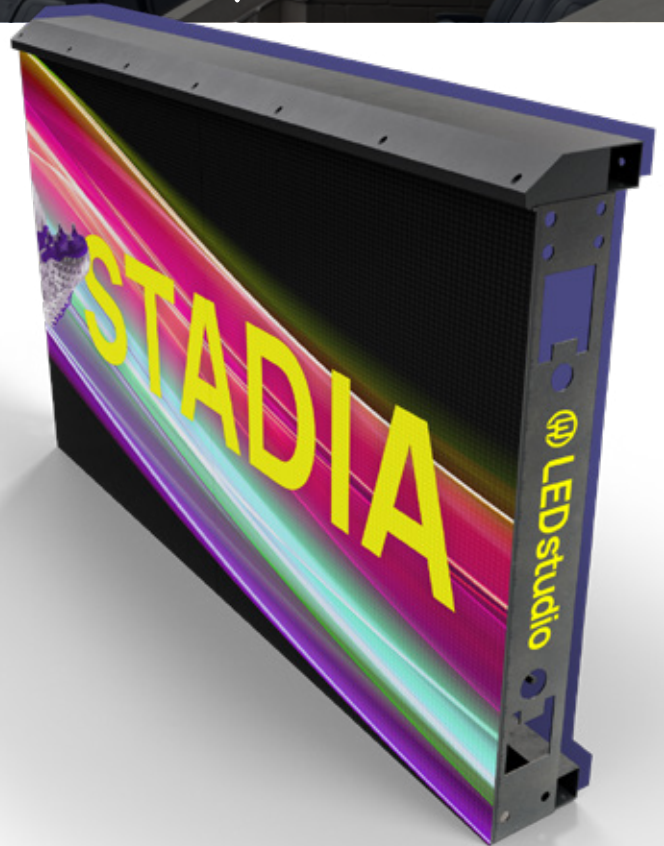
Single Cable Power & Data



Indoor & Outdoor Use



High Refresh Rates

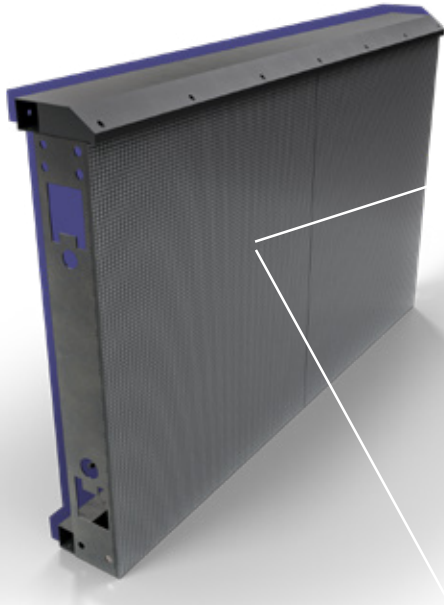
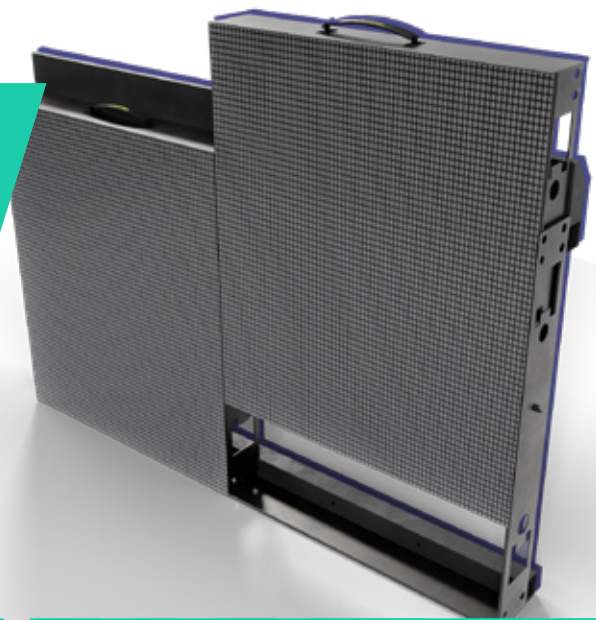


REDUCED WEIGHT

The STADIA Ribbon Mid Tier is designed to minimise installation weight, simplifying integration into stadium architecture and reducing the need for complex steelwork.

TOP-DOWN SERVICING

The Mid-Tier RIBBON allows easy access to display modules from balconies, eliminating the need for scaffolding and streamlining maintenance.



PROTECTIVE PIXEL LOUVRES

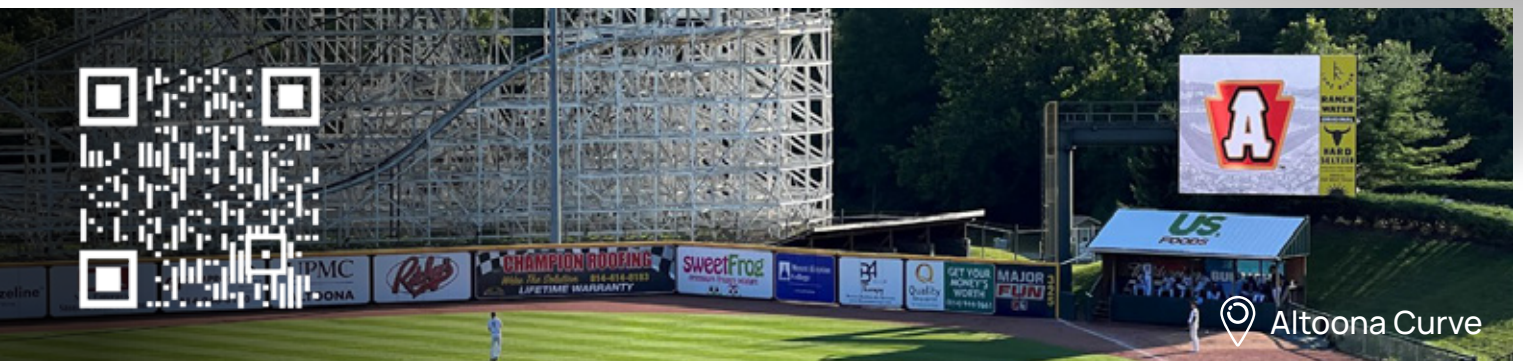
Flexible pixel louvres protect LEDs from impacts and enhance display contrast by shading pixels from direct sunlight, improving durability and visibility.

INTERNAL CABLE MANAGEMENT

Internal routing of power and signal cables reduces trip hazards and prevents disconnections, ensuring a safer, more secure, and streamlined setup.



Looking for BIG screens? Check out our FORTIS HIGHLIGHTS+ (Sport) below...






SPECIFICATIONS - PERIMETER (Display size customisable to project requirements)

Core Specifications SMD			
Pixel Pitch	6.67	8.33	10
Pixel Configuration	SMD		
Module Size (mm) (ft'in") (W×H)	400 x 300 / 1' 3.75" × 0' 11.81"		
Module Resolution (pixels) (W×H)	N/A		
Cabinet Size (mm) (ft'in") (W×H×D)	1600 x 900 x * / 5' 2.99" × 2' 11.43" x * (*Customised on project by project basis)		
Cabinet Resolution (pixels) (W×H)	240 x 135	192 x 108	160 x 90
Weight (kg/m²) (lbs/ft²)	56 / 11.5		
Cabinet Weight (kg/lbs)	N/A		
Maintenance	Front & Rear		
Brightness (nits)	6000		
Contrast Ratio	6000:1		
Lifetime Hours	Up to 100,000		
Aspect Ratio	N/A		
IP Rating	IP65		
Technical Specifications			
Viewing Angle	160° / 120°		
Grey Scale (bit)	16		
Refresh Rate* (Hz)	3840		
Working Voltage	<div>For full specifications, contact us at:</div> <div>sales@theledstudio.com +44 (0) 20 3832 9500</div>		
Scan Rate*			
Operating Temperature (°C / °F)			
Colour Temperature (K)			
Operating Humidity (RH)			
Maximum Power Consumption (W/m²) (W/ft²)			
Average Power Consumption (W/m²) (W/ft²)			

*All data contained is subject to change based on project requirements.
 *UEFA Specs applied on a project by project basis.
 *Scan Rate and Refresh Rate subject to project specifications.



 The Oval

SPECIFICATIONS - RIBBON MID-TIER (Display height customisable to project requirements)

Core Specifications SMD			
Pixel Pitch	6.25	8.33	10.4
Pixel Configuration	SMD		
Module Size (mm) (ft'in") (W×H)	125 x Custom / 0' 4.92" × Custom		
Module Resolution (pixels) (W×H)	N/A		
Cabinet Size (mm) (ft'in") (W×H×D)	Custom (Heights 500/750/1000 / 1' 7.69"/2' 3.56"/3' 3.37")		
Cabinet Resolution (pixels) (W×H)	80 × 80/120/160	60 × 60/90/120	48 × 48/72/96
Weight (kg/m²) (lbs/ft²)	25 / 5.1		
Cabinet Weight (kg/lbs)	Custom		
Maintenance	Front, Rear & Top-Down		
Brightness (nits)	6000		
Contrast Ratio	6000:1	8500:1	
Lifetime Hours	Up to 100,000		
Aspect Ratio	N/A		
IP Rating	IP65		
Technical Specifications			
Viewing Angle	160° / 120°		
Grey Scale (bit)	16		
Refresh Rate* (Hz)	3840		
Working Voltage	<div>For full specifications, contact us at:</div> <div>sales@theledstudio.com +44 (0) 20 3832 9500</div>		
Scan Rate*			
Operating Temperature (°C / °F)			
Colour Temperature (K)			
Operating Humidity (RH)			
Maximum Power Consumption (W/m²) (W/ft²)			
Average Power Consumption (W/m²) (W/ft²)			

For full specifications, contact us at:
sales@theledstudio.com | +44 (0) 20 3832 9500

*All data contained is subject to change based on project requirements.
*UEFA Specs applied on a project by project basis.
*Scan Rate and Refresh Rate subject to project specifications.

OUR SERVICES



CONSULTANCY



DESIGN & ENGINEERING



MANUFACTURING



INSTALLATION & SLA SERVICES



CONTENT CREATION

UK Showroom The Pavilion Merchant Square London, W2 1JZ United Kingdom Tel: +44 (0) 20 3832 9500	Head Office Cromwell Place Lime Tree Way Basingstoke, RG24 8YJ United Kingdom Tel: +44 (0) 20 3852 9500	EMEA Office 169–171 Makarios III Avenue Cedars Oasis Tower 3027, Limassol Cyprus Tel: +357 9625 8848	USA Office 22 Boston Wharf Road, 7th Floor, Boston, MA 02210 United States Tel: +1 (833) 533-7836	USA Showroom 123 Heiman Street, Suite 200, San Antonio, Texas 78205 United States Tel: +1 (833) 533-7836
--	---	--	---	--