



# CLARITY Series (COB)

WUHD (ULTRAWIDE) 21:9 - ALL-IN-ONE  
MAXIMISE YOUR COLLABORATION POTENTIAL



**SCREEN SIZE: 137", 164", 205"**  
**RESOLUTION: 5120 X 2160P**

**PIXEL TYPE: COB COMMON CATHODE**

## Product Overview

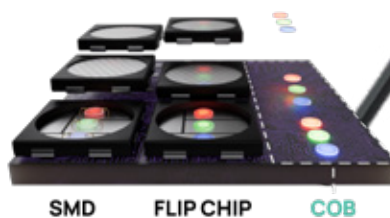
The CLARITY series enhances your viewing experience by supporting a 21:9 widescreen aspect ratio (2,560 × 2,160), offering a larger canvas compared to the conventional 16:9 display.

This specialised screen design optimally presents ultrawide applications, including widescreen videoconferencing platforms or side-by-side windows, maximising collaboration and productivity.



## Energy Efficient Design

The CLARITY Series integrates cutting-edge COB (Chip On Board) and Common Cathode pixel technology, setting a new standard in display excellence. These advanced technologies not only significantly reduce energy consumption but also remarkably enhance colour performance, offering a superior visual experience.



### Reduced Energy Consumption:

COB and Common Cathode technology are more energy-efficient, leading to lower electricity costs and a reduced environmental footprint.



### Enhanced Colour Performance:

Enjoy richer, more vibrant colours thanks to the advanced pixel technology, which delivers exceptional colour accuracy and contrast.



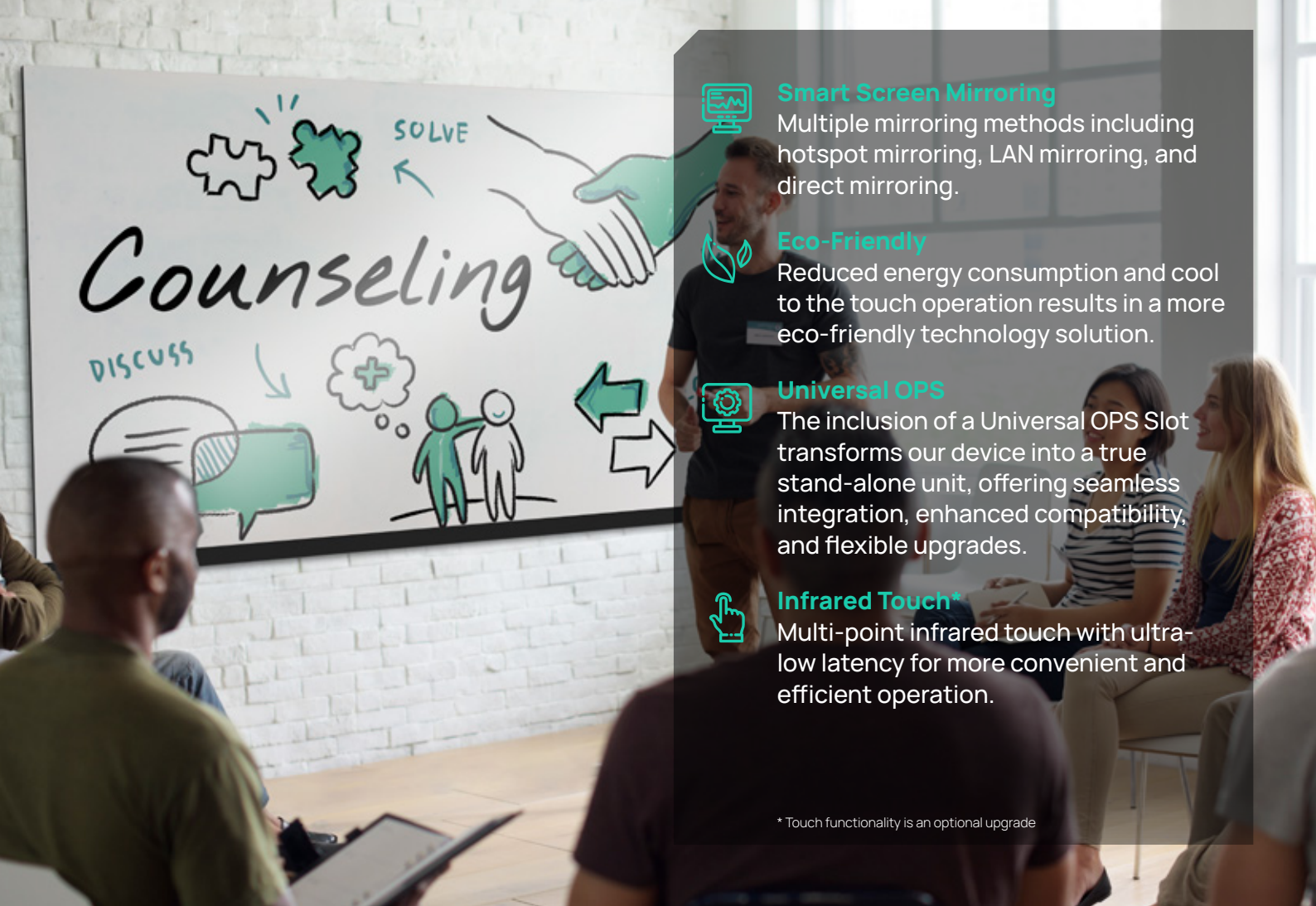
### Increased Durability:

COB technology enhances the robustness of the display, making it more resistant to damage and reducing pixel malfunction.



### Improved Heat Dissipation:

Common Cathode technology effectively reduces heat generation, ensuring the longevity of the display and maintaining consistent performance.



### Smart Screen Mirroring

Multiple mirroring methods including hotspot mirroring, LAN mirroring, and direct mirroring.



### Eco-Friendly

Reduced energy consumption and cool to the touch operation results in a more eco-friendly technology solution.



### Universal OPS

The inclusion of a Universal OPS Slot transforms our device into a true stand-alone unit, offering seamless integration, enhanced compatibility, and flexible upgrades.



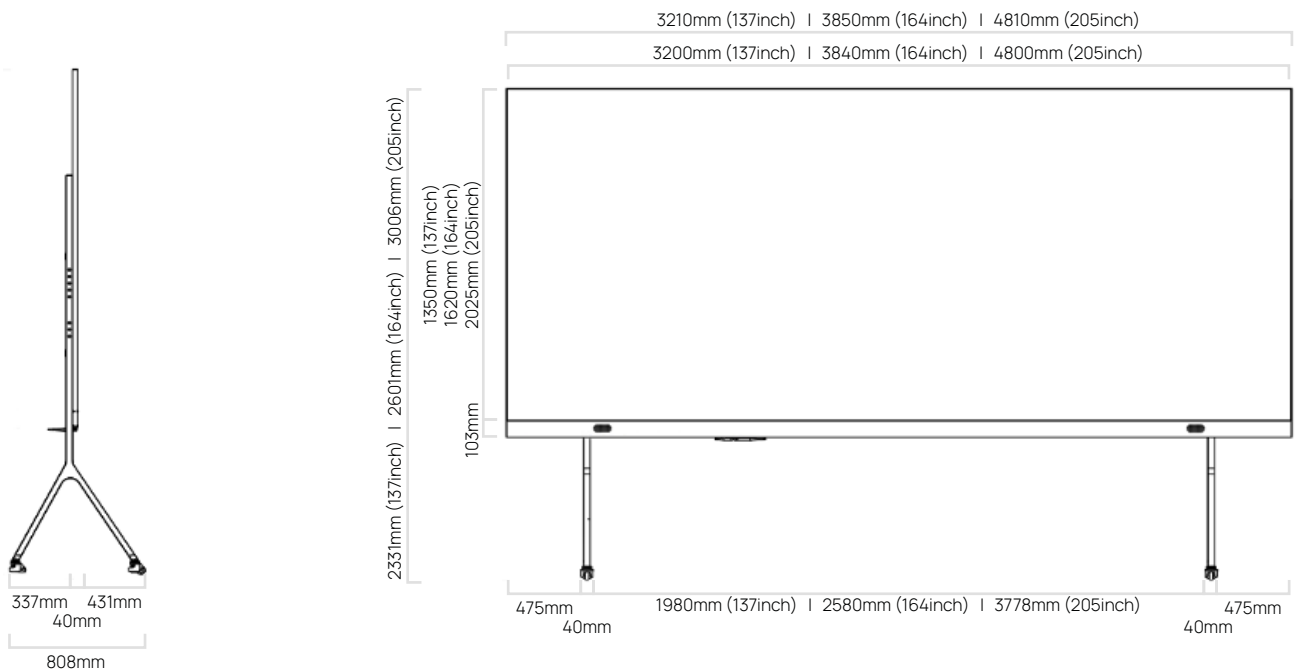
### Infrared Touch\*

Multi-point infrared touch with ultra-low latency for more convenient and efficient operation.

\* Touch functionality is an optional upgrade

## Mobile or Wall Mountable:

The Clarity offers versatility, engineered for both full mobility and secure wall mounting, ensuring it seamlessly adapts to various environments, from dynamic office spaces to sophisticated home settings, providing flexibility and convenience in any location.



Contact us: +44 (0)20 3832 9500

[www.theledstudio.com](http://www.theledstudio.com)

Version 11

 LEDstudio





Boardroom



Education



Reception/Lobby



Home Cinema

## SPECIFICATIONS

	137inch	164inch	205inch
Pixel Structure (Optional)	COB - Common Cathode		
Pixel Pitch (mm)	0.625	0.75	0.9375
Display Size (mm) (W+H)	3200x1350	3840x1620	4800x2025
Resolution (mm) (W+H)	5120x2160		
Android Version	Android 11		
Universal OPS	15 8G+128G		
Interface	HDMI x3, 3.5 x1, USB3.0 x1, USB2.0 x1, RJ45 x1		
WiFi	Wifi-5G x1, Wifi-2.4G x1, Wifi-AP x1		
Remote Control	Infrared/Bluetooth		
Audio	5W x2		
Touch Mode (Optional)	Infrared Touch		
Overall Weight (Without Base) (kg)	108	156	230
Brightness (nits)	≤1000		
Viewing Angle (H/V)	160°/160°		
Max Power Consumption (Display)	≤2160/200.1	≤3700/343.7	≤4860/451.5
Average Power Consumption (Display)	870/80.83	1480/137.5	1950/181.2
Working Voltage	AC100 ~ 240V (50~60Hz)		
Frame Frequency (Hz)	50/60		
Refresh Rate (Hz)	3840		
Gray Scale (bit)	14		
Operating Temperature (°C / °F)	-10 ~ +40 / +14 ~ +104		
Operating Humidity (RH)	10% ~ 90%		
Lifetime (Hrs)	≤100,000		
Maintenance Mode	Front maintenance		
Protection Grade	IP41		
Bracket Type	Mobile/Wall-mount		

\*All data contained is subject to change.



LED display technology  
for tomorrow's world. ↵

Please contact us if you have any questions,  
we're always happy to help

**[www.theledstudio.com](http://www.theledstudio.com)**  
**[sales@theledstudio.co.uk](mailto:sales@theledstudio.co.uk)**

**UK Showroom**

The Pavilion  
Merchant Square  
London, W2 1JZ  
United Kingdom

Tel: +44 (0) 20 3832 9500

**Head Office**

Unit 3 Clearwater Business Park  
Frankland Road  
Swindon, SN5 8YZ  
United Kingdom

Tel: +44 (0) 20 3852 9500

**EMEA Office**

169-171 Makarios III Avenue  
Cedars Oasis Tower  
3027, Limassol  
Cyprus

Tel: +357 9625 8848

**USA Office**

22 Boston Wharf Road,  
7th Floor,  
Boston, MA 02210  
United States

Tel: +1 (833) 533-7836

**USA Showroom**

123 Heiman Street, Suite 200,  
San Antonio,  
Texas 78205  
United States

Tel: +1 (833) 533-7836