



# CURVUS Series (SMD & Flip Chip)



## SHAPE THE FUTURE WITH **FLEXIBILITY**



CONCAVE  
& CONVEX  
CURVES



3840HZ  
REFRESH RATE



≥ 764MM MIN  
DIAMETER



PIXEL PITCHES:  
P1.25 - P4



# TRANSFORMING SPACES THROUGH **CURVED LED** BRILLIANCE

Unleashing the power of true flexibility, the CURVUS series is the ultimate choice for creatives that want to design visual solutions that truly captivate audiences.



≤ 10,000:1  
CONTRAST



100,000+  
LIFETIME



GOB  
MODULES  
– ULTIMATE  
DURABILITY



COMMON  
CATHODE  
& 24BIT  
COLOUR



# CONTRAST



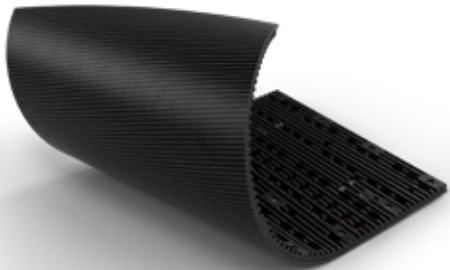
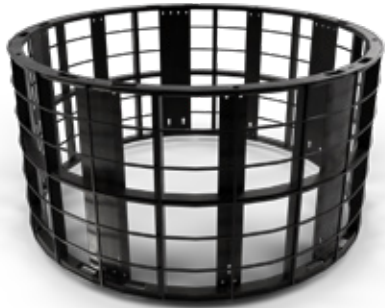
**SMD** 5,000:1

**FLIP-CHIP** 10,000:1



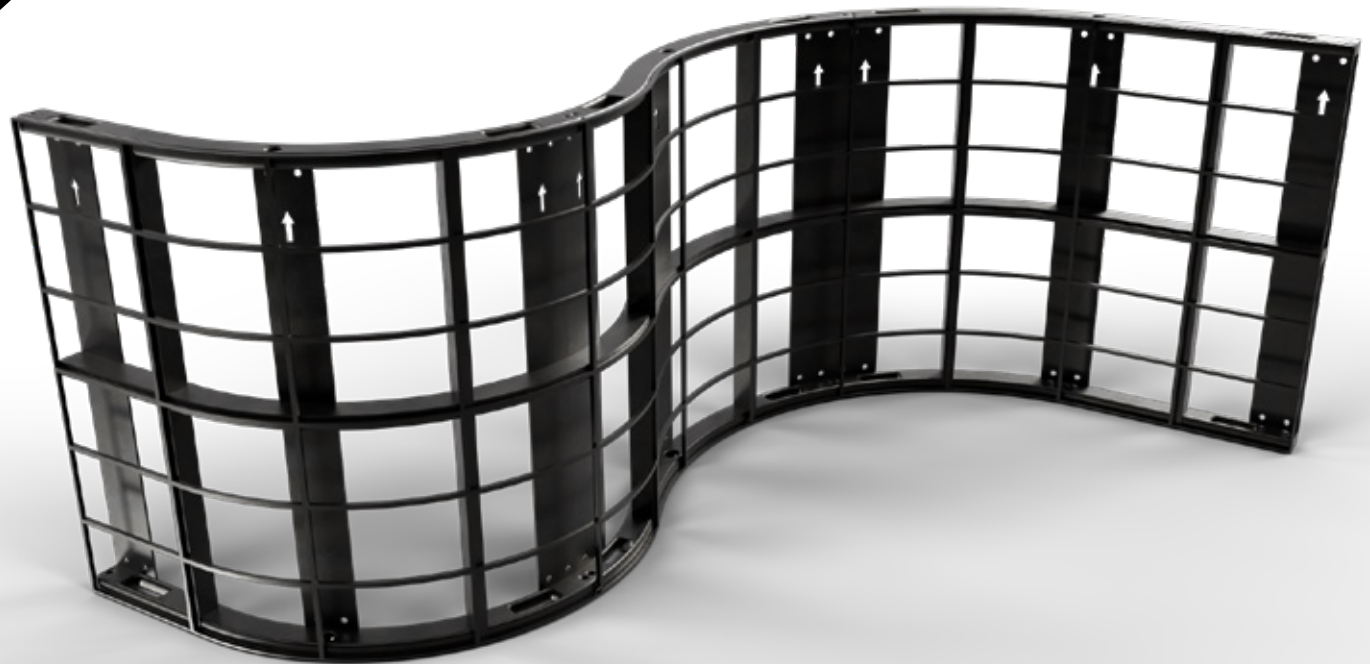
# PRODUCT FOR CREATIVES

Bespoke framework that is precision engineered allows for artistic creations that truly stand out and make a statement whilst also being easy to install.



## PRECISION ENGINEERING

Bespoke framework/ cabinets ensuring high quality finish and hassle-free installation

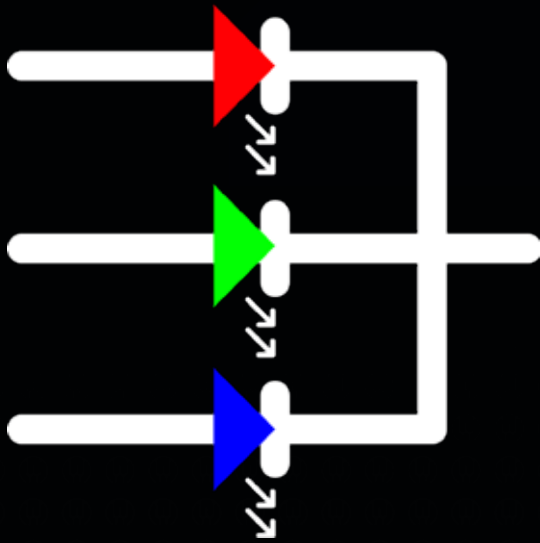


## SIMPLE INSTALL

Simple snap magnet module installation allows for efficient installation and easy servicing.

## ULTRA-THIN & ULTRA-LIGHT WEIGHT

Lightweight designs allow for creative product placements and reduced costs on structural materials.



# COMMON CATHODE DESIGN\*

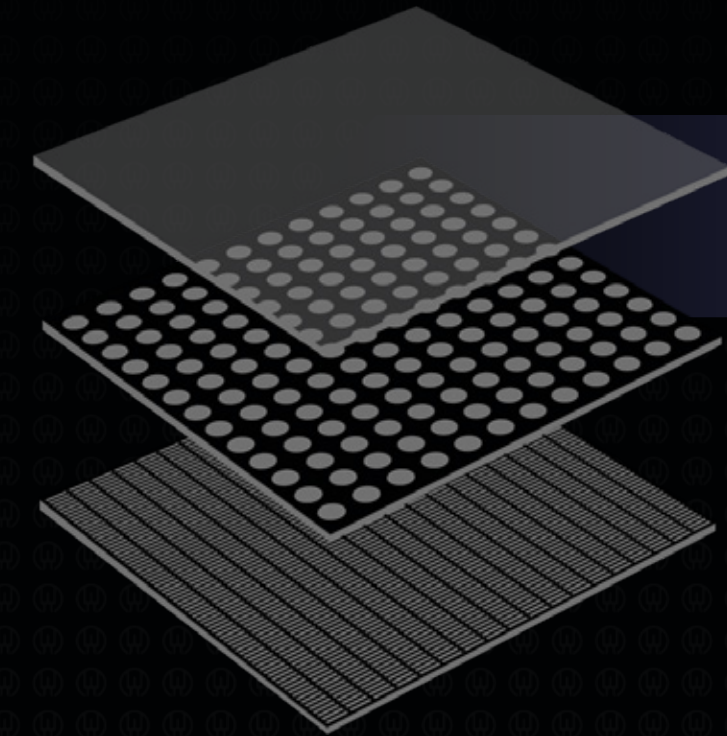
Experience brilliance like never before with our cutting-edge LED display featuring common cathode technology. Immerse yourself in stunning visuals, unparalleled energy efficiency, and vibrant colours that come to life. The CURVUS ensures impeccable uniformity and superior image performance.

\*Only CURVUS pro uses common cathode technology

## GOB MODULE FINISH\*

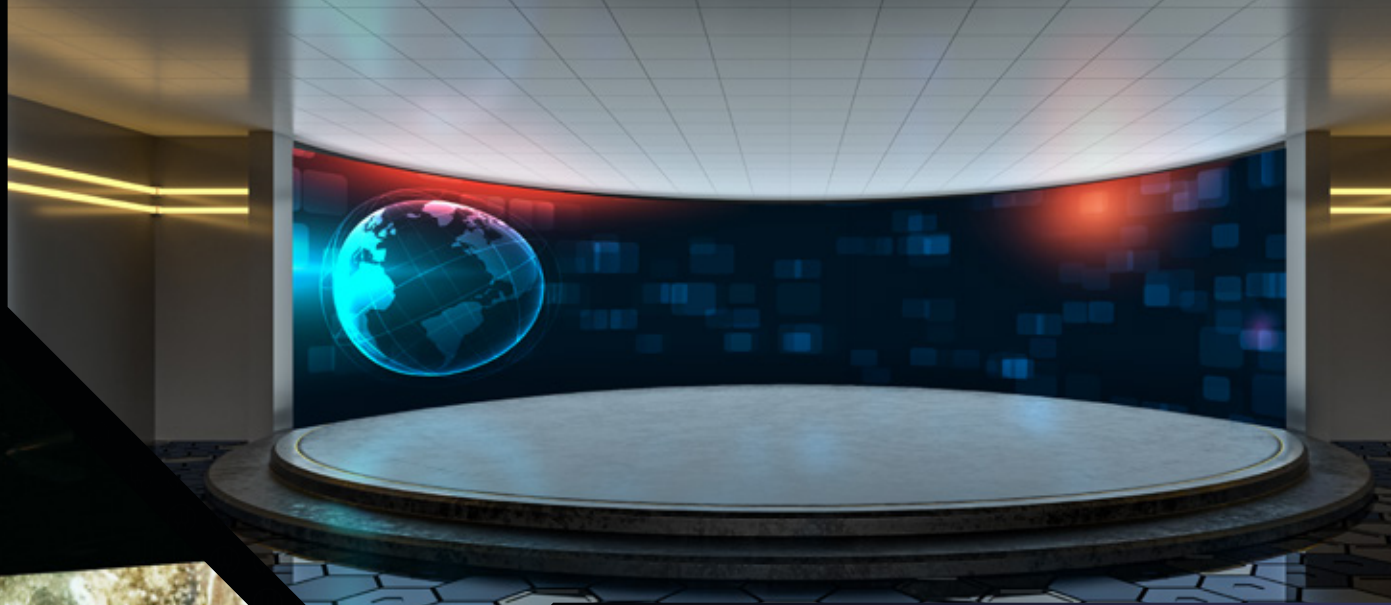
This innovative technology seals the LED's with transparent epoxy glue. This protects the LED from any harmful accidents by making it anti-collision, waterproof, anti-UV and dust proof. The lifespan of the LED is also extended due to improved heat dissipation.

\*GOB module finish is an additional upgrade option





# MUSEUMS & GALLERIES



## BROADCAST

## RETAIL



Model	CURVUS (SMD)								CURVUS Pro (Flip-Chip)		
Pixel Pitch (mm)	1.25	1.5625	1.667	1.875	1.875	2.5	3	4	1.25	1.5625	1.875
Module Size (W+D+H)	240x120x6.25mm 9.45x4.72x0.25in	300x168.75x6.25mm 11.81x6.64x0.25in	240x160x6.05mm 9.45x6.3x0.24in	300x168.75x6.05mm 11.81x6.64x0.24in	270x120x6.05mm 10.62x4.72x0.24in	240x160x6.4mm 9.45x6.3x0.25in	240x120x6.6mm 9.45x4.72x0.26in	240x120x6.6mm 9.45x4.72x0.26in	300x168.75x6.25mm 11.81x6.64x0.25in	300x168.75x6.25mm 11.81x6.64x0.25in	300x168.75x6.05mm 11.81x6.64x0.24in
LED Type	SMD 1010	SMD 1010	SMD 1010	SMD 1010	SMD 1010	SMD 1515	SMD 2020	SMD 2020	Flip-Chip 1010	Flip-Chip 1010	Flip-Chip 1010
Module Resolution	192x96	192x108	144x96	160x90	144x64	96x64	80x40	60x30	240x135	192x108	160x90
The Minimum Diameter	1222.3mm / 48.12in	1336.9mm / 52.63in	763.9mm / 30.07in	859.4mm / 33.83in	773.5mm / 30.45in	763.9mm / 30.07in	763.9mm / 30.07in	763.9mm / 30.07in	1336.9mm / 52.63in	1336.9mm / 52.63in	859.4mm / 33.83in
Brightness	≥600cd/m2	≥650cd/m2	≥600cd/m2	≥600cd/m2	≥600cd/m2	≥800cd/m2	≥800cd/m2	≥800cd/m2	≥1000cd/m2	≥1000cd/m2	≥1000cd/m2
Contrast Ratio	≤5,000:1								≤10,000:1		
Colour Temperature	6500								6500		
Scan Mode	1/48	1/27	1/32	1/30	1/30	1/32	1/20	1/15	1/27	1/27	1/30
Power Consumption (W/m2 / W/ft2)	550 / 51.09	500 / 46.45	400 / 37.16	500 / 46.45	550 / 51.09	440 / 40.87	390 / 36.23	350 / 32.51	580 / 53.88		
Application	Indoor										
Viewing Angle	≥120										
Refresh Rate	≤3840Hz										
Frame Frequency	≥60Hz										
AC Input Voltage	110V~240V±10%										
Earth Leakage Current	≤2mA										
Operating Temperature	0 ~ +40 / +32 - +104										
Storage Temperature	-20 ~ +50 / -4 - +122										
Operating Humidity	10%~90%										
Lifetime (Hours)	≥100,000										

\*All data contained is subject to change.



LED display technology  
for tomorrow's world.

Please contact us if you have any questions,  
we're always happy to help

**[www.theledstudio.com](http://www.theledstudio.com)**  
**[sales@theledstudio.co.uk](mailto:sales@theledstudio.co.uk)**

**UK Showroom**

The Pavilion  
Merchant Square  
London, W2 1JZ  
United Kingdom

Tel: +44 (0) 20 3832 9500

**Head Office**

Unit 3 Clearwater Business Park  
Frankland Road  
Swindon, SN5 8YZ  
United Kingdom

Tel: +44 (0) 20 3852 9500

**EMEA Office**

169-171 Makarios III Avenue  
Cedars Oasis Tower  
3027, Limassol  
Cyprus

Tel: +357 9625 8848

**USA Office**

22 Boston Wharf Road,  
7th Floor,  
Boston, MA 02210  
USA

Tel: +1 (508) 657-4622

**USA Showroom**

8701 John W Carpenter Frwy,  
Suite 150,  
Dallas, TX 75247  
USA

Tel: +1 (508) 657-4622