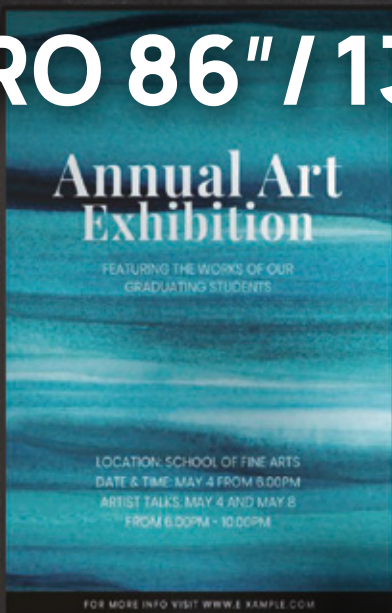




AEGIS PRO 86"/130"

2023
INAVATION
AWARDS
WINNER



**TRUE OUTDOOR
NARROW PIXEL PITCH
KIOSK.**

TAKING SUSTAINABILITY TO THE NEXT LEVEL

GREEN technology.

The AEGIS Pro paired with the solar fin has the potential to fully power the display for up to 9 hours per day when exposed to the correct lighting conditions. Paired with energy efficient Flip Chip technology, the AEGIS Pro is designed to maximize ROI and reduce its carbon footprint.

Pixel real-estate that will cause impact.

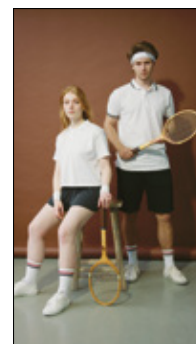
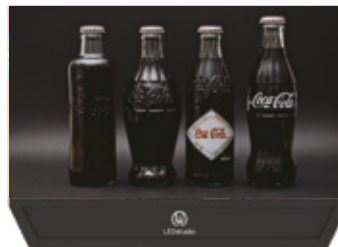
Due to its narrow pixel pitch the Aegis can be used to target audiences near and far.

Up to 130" in size, 170 degree viewing angles and pixel pitches as low as P1.5, never miss an opportunity to shine regardless of where the audience is.

Customize your display.

Multiple enclosure options.

Landscape and portrait orientations *.



Up to
4,000 nits ☀️
high brightness

10,000:1 🟡
high contrast ratio

22 bit+ ⬤
high gray scale

3840Hz 🔁
high refresh rate

High resolutions 👁️
P1.5, P1.875, P2.5

* Only the 130" display is available in landscape and portrait orientations

Designed for the toughest of environments.

Front: IP65 / Back: IP54

Small pitch outdoor waterproofed enclosure, suitable to adapt to any weather condition.

Wind, rain, snow and dust.



130" / 86" / LED display

With incredible detail and vivid colours, the stunning Aegis Series display is perfect for any out of home ad campaign from bus shelters to retail kiosks.



Android system

Built-in latest android system, so that it has richer functional applications, and it is more convenient and quick to use.



Sleek, strong, and durable design

The Aegis is built to be durable so you have peace of mind knowing that it can handle any weather condition.



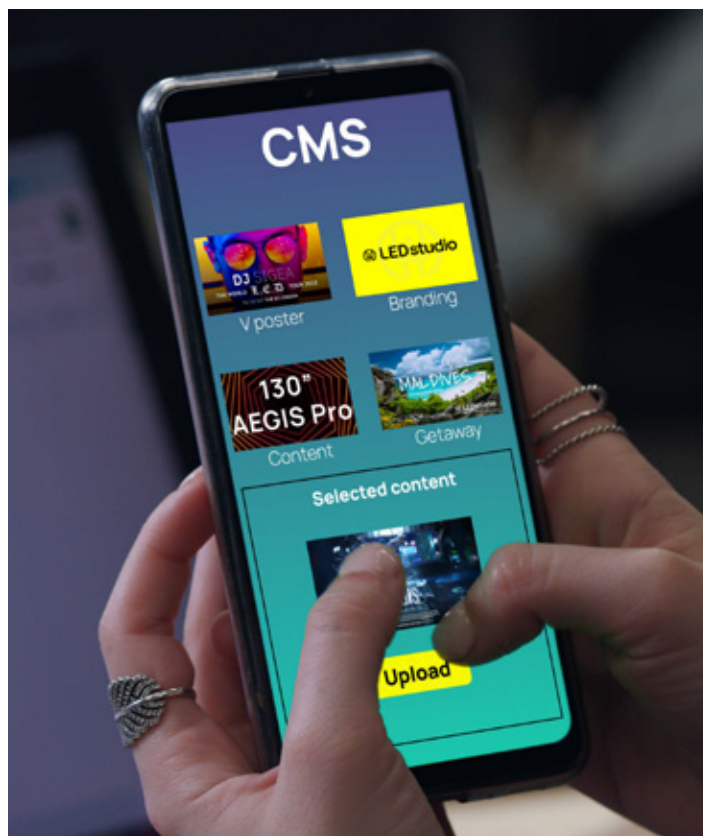
High brightness

The first true outdoor Flip Chip display, ever. Up to 4000 nits of brightness. An astonishing 10,000:1 contrast ratio and super wide viewing angle. Over a billion colours presented with exceptional accuracy and dynamic range that transforms the out of home landscape.

Built in CMS.

The Aegis supports multiple cross-regional networking methods to efficiently achieve intelligent cloud management functions, like remote monitoring, and content distribution.

Third party CMS support is also optional.



SPECIFICATIONS - AEGIS Pro SMD Flip Chip (High Bright)

| Core Specifications | | | |
|--|-----------------------------------|-----------------------------------|-----------------------------------|
| Pixel Pitch | 1.5/1.87/2.5 | 1.5/1.87/2.5 | 1.5/1.87/2.5 |
| Pixel Configuration | Flip Chip (High Bright) | Flip Chip (High Bright) | Flip Chip (High Bright) |
| Module Size (mm) (ft'in") (W×H) | N/A | | |
| Module Resolution (pixels) (W×H) | N/A | | |
| Cabinet Size (mm) (ft'in") (W×H×D) | N/A | | |
| Cabinet Resolution (pixels) (W×H) | N/A | | |
| Display Size (mm) (ft'in") (W×H×D) | 2880 x 1620 / 9' 5.39" × 5' 3.78" | 1620 x 2880 / 5' 3.78" × 9' 5.39" | 1080 x 1920 / 3' 6.52" × 6' 3.59" |
| Display Resolution (pixels) (WxH) | 1920x1080/1536x864/1152x648 | 1080x1920/864x1536/648x1152 | 720x1280/576x1024/432x768 |
| Display Diagonal (in) | 130 | 130 (Portrait) | 86 |
| Weight (kg/m²) (lbs/ft²) | 175 / 35.8 | 175 / 35.8 | 80 / 16.4 |
| Cabinet Weight (kg/lbs) | N/A | | |
| Maintenance | Front | Front | Front |
| Brightness (nits) | 4000 | 4000 | 4000 |
| Contrast Ratio | 10,000:1 | 10,000:1 | 10,000:1 |
| Lifetime Hours ≥ | 100,000 | 100,000 | 100,000 |
| Aspect Ratio | 16:9 | 9:16 | 16:9 |
| IP Rating | IP65 | IP65 | IP65 |
| Technical Specifications | | | |
| Viewing Angle° | 140 | 140 | 140 |
| Grey Scale (bit) | 16 | 16 | 16 |
| Refresh Rate* (Hz) | 3840 | 3840 | 3840 |
| Working Voltage | AC100-240V (50-60Hz) | AC100-240V (50-60Hz) | AC100-240V (50-60Hz) |
| Scan Rate* | 10 | 10 | 10 |
| Operating Temperature (°C / °F) | -20 to 60 / -4 to 140 | -20 to 60 / -4 to 140 | -20 to 60 / -4 to 140 |
| Colour Temperature (K) | 5000-7500 | 5000-7500 | 5000-7500 |
| Operating Humidity (RH) | 10% - 90% | 10% - 90% | 10% - 90% |
| Maximum Power Consumption (W/m²) (W/ft²) | N/A | | |
| Average Power Consumption (W/m²) (W/ft²) | N/A | | |
| Display Power Consumption (MAX) | 3400w | 3400w | 1500w |

*All data contained is subject to change based on project requirements.
*Scan Rate and Refresh Rate subject to project specifications.
*Average power consumption is subject to display brightness and pixel configuration.



Quick and easy maintenance.

Unlike LCD screens that need complete replacement in the event of a fault, LED displays allow for individual modules or pixel replacement, making them far more Eco friendly and cost effective.



LED display technology
for tomorrow's world.

Please contact us if you have any questions,
we're always happy to help

www.theledstudio.com
sales@theledstudio.co.uk

UK Showroom

The Pavilion
Merchant Square
London, W2 1JZ
United Kingdom

Tel: +44 (0) 20 3832 9500

Head Office

Cromwell Place
Lime Tree Way
Basingstoke, RG24 8YJ
United Kingdom

Tel: +44 (0) 20 3852 9500

EMEA Office

169-171 Makarios III Avenue
Cedars Oasis Tower
3027, Limassol
Cyprus

Tel: +357 9625 8848

USA Office

22 Boston Wharf Road,
7th Floor,
Boston, MA 02210
United States

Tel: +1 (833) 533-7836

USA Showroom

123 Heiman Street, Suite 200,
San Antonio,
Texas 78205
United States

Tel: +1 (833) 533-7836